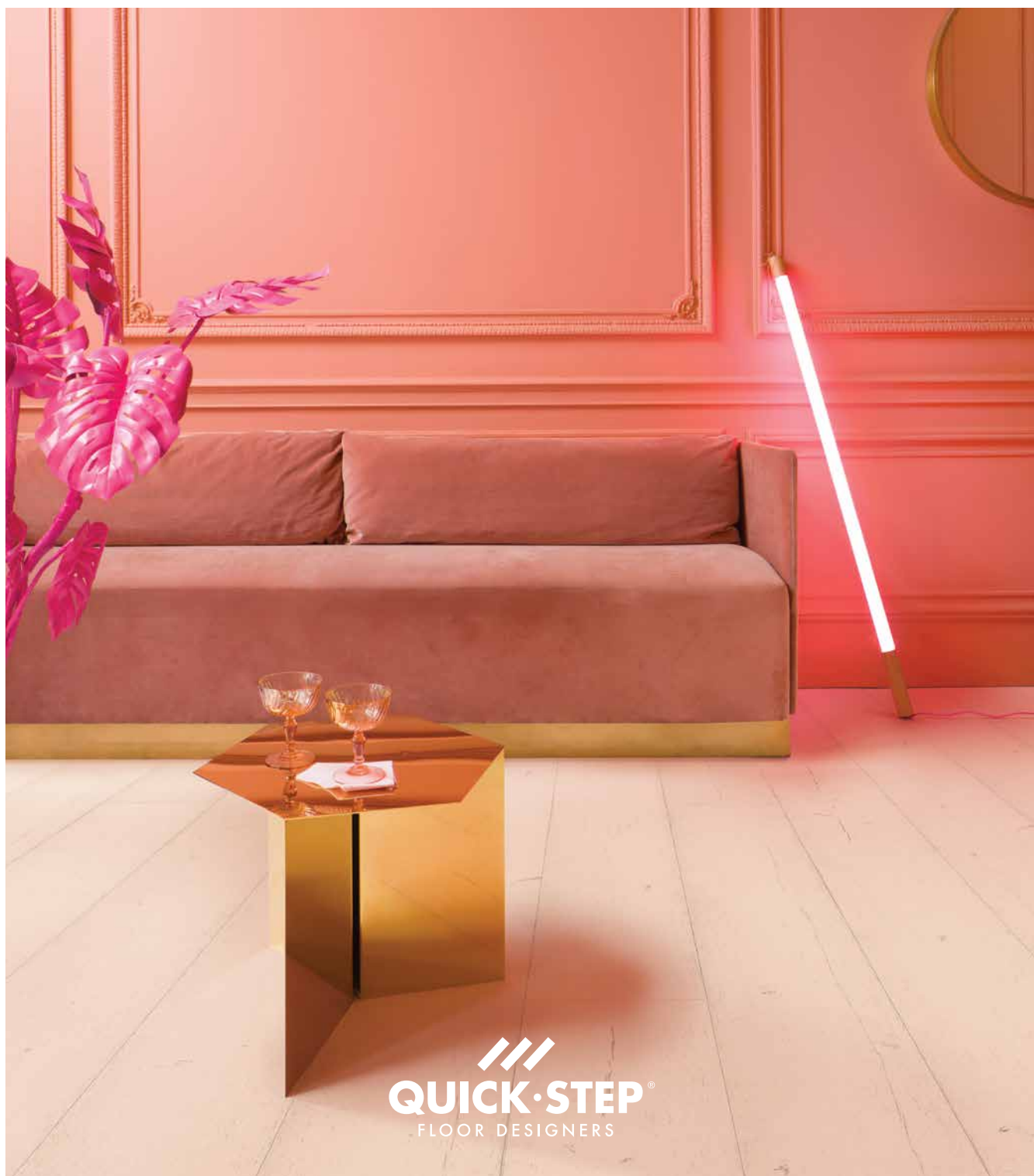


COLLECTION

LAMINATE




QUICK-STEP®
FLOOR DESIGNERS

Laminate: an innovative all-rounder

When Quick-Step launched in 1990, the brand immediately put laminate flooring on the map. While we have since expanded in wood and vinyl flooring, we have continued to improve our laminate category with even more life-like designs, structures and performance. In 2019, this process has lead us to our brand new Signature collection.

Enter the world of Quick•Step®

The history of Quick-Step is laden with tales of daring entrepreneurship and innovation. Thanks to that rich history, we're not only able to present you with some of the most beautiful flooring on the market, but the strongest as well. We pride ourselves on our dedication to beauty and elegance that is built to last.

**“INNOVATION AND MODERNISATION
ARE PART OF THE QUICK-STEP DNA. WE’RE ALWAYS
LOOKING TO MAKE THINGS BETTER,
MORE BEAUTIFUL AND MORE EFFICIENT.”**

BERNARD THIERS, CEO

We are confident that you'll find a Quick-Step floor to match your own unique vision, a floor that inspires you to get started on that renovation project, a floor that will help turn your house into the home you've always wanted – one plank at a time. And even more, you'll find a floor that will last a lifetime.

**IF FINDING THE MOST ENDURING AND ELEGANT
FLOOR IS YOUR GOAL, WE’RE HERE TO GUIDE YOU.**

Collection

Impressive/Impressive Ultra

Eligna

Installation

Easy installation

Finish in style

Worry-free maintenance

Setting the stage for sustainability



Choose your Laminate floor



Impressive

A collection of medium-sized and water-resistant laminate floors that look and feel exceptionally natural.

Dimensions:
138 x 19 cm



Thickness:
8 mm

Pack:
7 planks = 1.835 m²

Bevels:
4 genuine bevels

Warranty:
Domestic 25y / Commercial 5y / Wet 10y

Class:
32

Installation:



Waterproof surface:



Impressive Ultra

Besides the impressive natural look and water-resistant features, Impressive Ultra adds an extra layer of protection that will make your floor last even longer. Ideal for rooms under intensive use.

Dimensions:
138 x 19 cm



Thickness:
12 mm

Pack:
5 planks = 1.311 m²

Bevels:
4 genuine bevels

Warranty:
Domestic 25y / Commercial 10y / Wet 10y

Class:
33

Installation:



Waterproof surface:



Eligna

Elegant, water-resistant floors with an excellent balance between length and width. The absence of bevels gives your interior a streamlined appearance.

Dimensions:
138 x 15.6 cm



Thickness:
8 mm

Pack:
8 planks = 1.722 m²

Bevels:
0

Warranty:
Domestic 25y / Commercial 5y / Wet 5y

Class:
32

Installation:



Waterproof surface:



Impressive

Impressive Ultra

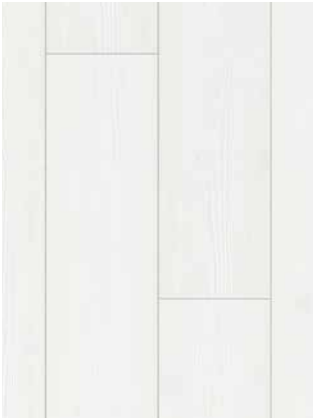


A collection of medium-sized and water-resistant laminate floors that look and feel exceptionally natural. Impressive Ultra adds an extra layer of protection that will make your floor last longer, even under intensive use.

IMPRESSIVE
138 x 19 cm x 8 mm

IMPRESSIVE ULTRA
138 x 19 cm x 12 mm

4 GENUINE BEVELS



WHITE PLANKS

IM1859	IMU1859
--------	---------



PATINA CLASSIC OAK LIGHT

IM3559	IMU3559
--------	---------



PATINA CLASSIC OAK GREY

IM3560	IMU3560
--------	---------



SOFT OAK LIGHT

IM1854	IMU1854
--------	---------



SAW CUT OAK GREY

IM1858	IMU1858
--------	---------

Impressive – Impressive Ultra



SOFT OAK GREY

IM3558	IMU3558
--------	---------



NATURAL PINE

IM1860	IMU1860
--------	---------



SANDBLASTED OAK NATURAL

IM1853	IMU1853
--------	---------



CLASSIC OAK BEIGE

IM1847	IMU1847
--------	---------



WHITE VARNISHED OAK

IM3105	IMU3105
--------	---------



SOFT OAK MEDIUM

IM1856	IMU1856
--------	---------



SOFT OAK NATURAL

IM1855	IMU1855
--------	---------



NATURAL VARNISHED OAK

IM3106	IMU3106
--------	---------



CLASSIC OAK NATURAL

IM1848	IMU1848
--------	---------



SOFT OAK LIGHT BROWN

IM3557	IMU3557
--------	---------



SCRAPED OAK GREY BROWN

IM1850	IMU1850
--------	---------



CLASSIC OAK BROWN

IM1849	IMU1849
--------	---------



MERBAU

IM3440	IMU3440
--------	---------



ESPRESSO WALNUT

IM3439	IMU3439
--------	---------



BURNED PLANKS

IM1862	IMU1862
--------	---------

Eligna

SIZE
138 x 15.6 cm x 8 mm



Elegant, water-resistant floors with an excellent balance between length and width. The absence of bevels gives your interior a streamlined appearance.

0 BEVELS



WENGÉ PASSIONATA

EL1300



ESTATE OAK LIGHT GREY

EL3573



VENICE OAK LIGHT

EL3990



ESTATE OAK WARM GREY

EL3840



NEWCASTLE OAK GREY

EL3580



ESTATE OAK BEIGE

EL3574



Eligna



VENICE OAK BEIGE

EL3907



LIGHT GREY VARNISHED OAK

EL1304



WHITE VARNISHED OAK

EL915

Eligna



NEWCASTLE OAK BROWN

EL3582



VENICE OAK NATURAL

EL3908



NATURAL VARNISHED OAK

EL896



WHITE OAK LIGHT

EL1491



OILED WALNUT

EL1043



EL3573



VINTAGE OAK NATURAL
VARNISHED

EL995



OLD OAK MATT OILED

EL312



METALLIC CÉRUSÉ OAK GOLD

EL3466

Metallic effect



VINTAGE OAK DARK
VARNISHED

EL1001



MERBAU

EL996



NEWCASTLE OAK DARK

EL3581



EVERYTHING YOU NEED
FOR A PERFECT FLOORING EXPERIENCE

Easy installation

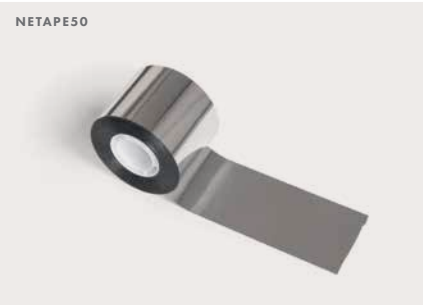
The perfect underlay

Choosing the right underlay is essential for the final look, quality and comfort of your new laminate floor. Moreover, Quick-Step’s easy-to-install underlays are compatible with floor heating and provide:

- excellent acoustic and thermal insulation;
- a stable base for the Uniclic® and Uniclic® Multifit systems;
- protection from rising damp.

Find out which one of our five underlays is the best choice for your project.

Installation tools



ADHESIVE TAPE

Roll: 50 m

Attach your underlay for a moisture-proof underlay installation.



INSTALLATION SET

Tapping block: to easily click planks together.
Cramp iron: to click planks together in hard-to-reach places. **Spacers:** to provide an expansion joint (8 to 10 mm) between walls and floor.

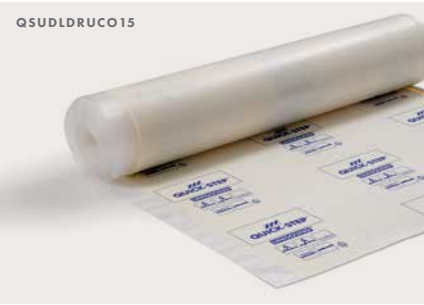
Quick•Step® underlays



SILENT WALK

Thickness: 2 mm Roll: 7 m²

The ideal underlay for rooms with heavy traffic (living room, hallway, etc.). Offers optimal noise reduction and the best efficiency with floor heating.



UNISOUND

Thickness: 2 mm Roll: 15 m²

Great all-round underlay for rooms with frequent traffic (living room, hallway, kitchen, etc.).



BASIC PLUS

Thickness: 2 mm Roll: 15 m²/60 m²

Good all-round underlay for rooms with less traffic (attic, home office, etc.).



TRANSITSOUND

Thickness: 2 mm Roll: 15 m²

Ideal noise-reducing underlay for upper floor rooms and apartments.



THERMOLEVEL

Thickness: 5 mm Box: 9 m²

Ideal for irregular subfloors. Provides additional insulation. Not compatible with floor heating.

INSTALLING THE RIGHT UNDERLAY
HAS A MAJOR IMPACT ON
THE FINAL LOOK, QUALITY AND
ACOUSTICS OF YOUR FLOOR.

Finish in style

Why choose Quick•Step® skirtings and profiles?

PERFECTLY MATCHING COLOURS

Our skirtings and profiles perfectly match the colour of every floor.

SCRATCH-RESISTANT TOP LAYER

Quick-Step skirtings and profiles are scratch-resistant and protected against everyday wear and tear.

QUICK•STEP® WARRANTY

They come with the same warranty as the floors.

Skirtings



STANDARD SKIRTING

240 x 1.2 x 5.8 cm
Installation method: One4All Glue or Clips

Adjustable in height (4 or 5.8 cm). Use the included plugs (per 6 pieces of skirting) to connect skirtings, and also at the corners. Plugs are also available separately (NEPLUG).



LARGO SKIRTING

240 x 1.4 x 10 cm
Installation method: One4All Glue or Track

Includes space to hide cables.
Only for Largo floors.



PARQUET SKIRTING BOARD

240 x 1.4 x 7.7 cm
Installation method: One4All Glue or Track

Includes space to hide cables. Use plugs (NEPLUG) to connect skirtings, also along the corners. To be ordered separately.



SCOTIA

240 x 1.7 x 1.7 cm
Installation method: One4All Glue

Finish in style

Paintable skirtings

Paintable skirtings with Incizo® technology are easily cut to fit the desired height (thanks to the preapplied cuts). Once they are fitted, you can paint them or just leave white.



OVOLO PAINTABLE SKIRTING

240 x 1.6 x 16 cm
Installation method: One4All Glue

Can be used in two shapes for more decorative freedom.
Adjustable in height (use the Incizo® knife): 5 heights possible between 2.5 cm and 13.4 cm.



SHAPE 1



SHAPE 2



OGEE PAINTABLE SKIRTING

240 x 1.6 x 16 cm
Installation method: One4All Glue

Can be used in two shapes for more decorative freedom.
Adjustable in height (use the Incizo® knife): 4 heights possible between 2 cm and 14 cm.



SHAPE 1



SHAPE 2



COVER PAINTABLE SKIRTING

240 x 1.6 x 12.9 cm
Installation method: One4All Glue

Adjustable in height: 4 heights possible between 6.8 cm and 12.9 cm.



WATER-RESISTANT PAINTABLE SKIRTING

200 x 1.2 x 5.8 cm
Installation method: One4All Glue



PAINTABLE SKIRTING

240 x 1.4 x 4 cm
Installation method: One4All Glue

Also available in a flexible version (QSFLEXSKR) to finish your entire space in the same style.



FLEXIBLE PAINTABLE SKIRTING

1.4 x 4 cm
Installation method: Glue

Can be cut to the desired length.

Finish in style

Installation tools
for skirtings



ONE4ALL GLUE

290 ml

One tube glues 15 m of skirtings.



PLUGS

24 connections for inside and outside corners +
24 connections for straight stretches.

Only for standard and parquet skirtings.



TRACK

240 x 0.8 x 2.7 cm

Secure the track to the wall with screws or the One4All glue and click the skirtings in place.



CLIPS

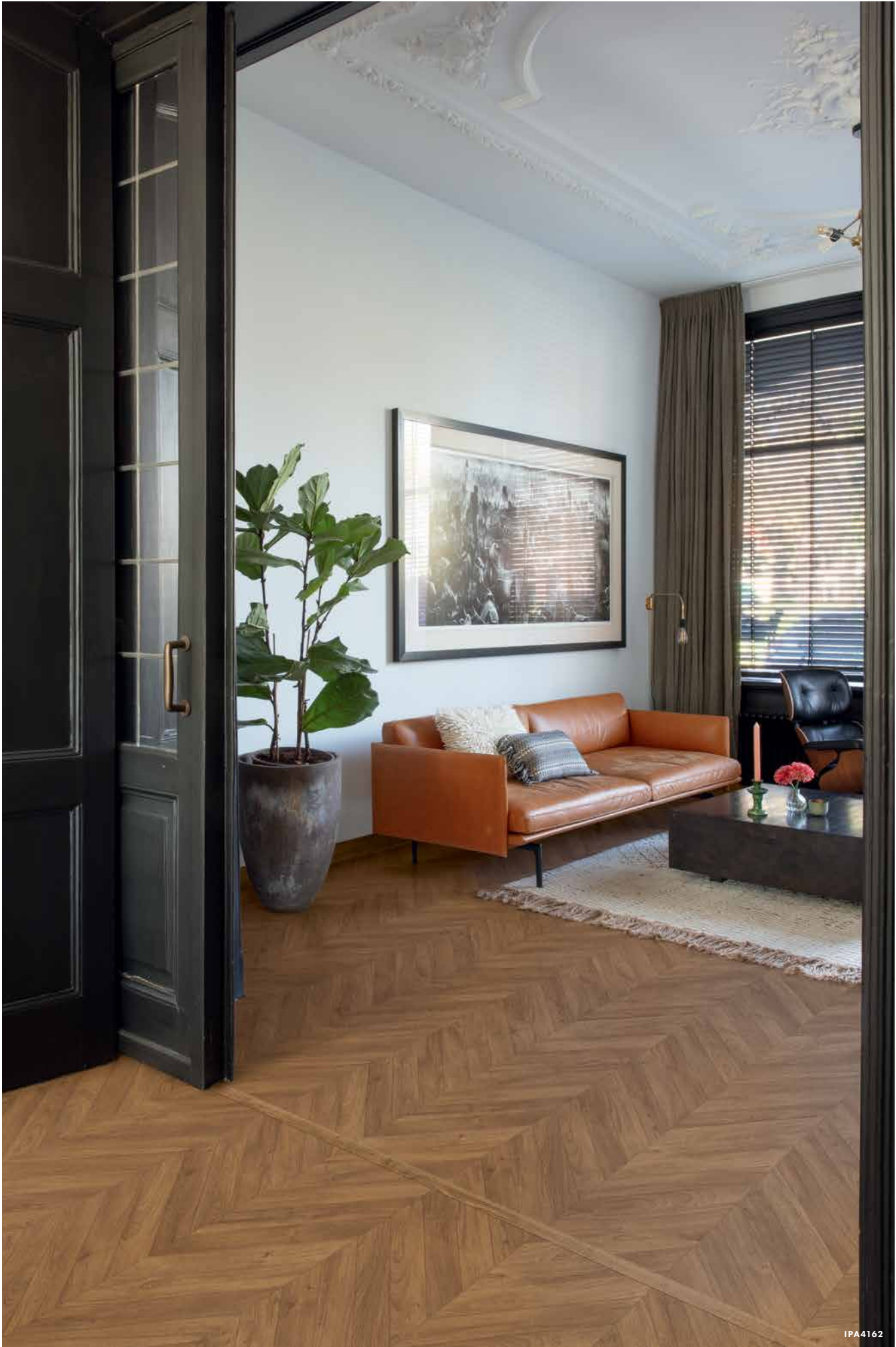
1 pack: 50 clips

Place one clip every 0.5 m along the wall and click the skirtings to the clips. Not compatible with 12 mm floors.

**MOISTURE-PROOF FINISHING TOOLS:
USE OUR HYDROKIT AND PE FOAM FOR A
100% WATER-RESISTANT FINISH.**

Discover more on p. 69

Finish in style



IPA4162

Finish your floor with our skirtings and Incizo® profile, available in perfectly matching colours.

Profiles

Incizo® profile: 1 profile, 5 applications

Quick-Step's Incizo® profile is a multifunctional finishing tool that can be used to finish your floor and stairs in matching colours. Simply cut the Incizo® basic profile to desired shape with the supplied Incizo® knife.

INCIZO® PROFILE

215 x 4.8 x 1.3 cm
Contents: 1 Incizo® profile, 1 Incizo® knife, 1 plastic rail.

APPLICATION 1

Connect two floors of different heights.



APPLICATION 2

Connect two floors of the same height.



APPLICATION 3

Finish your floor along walls or windows.



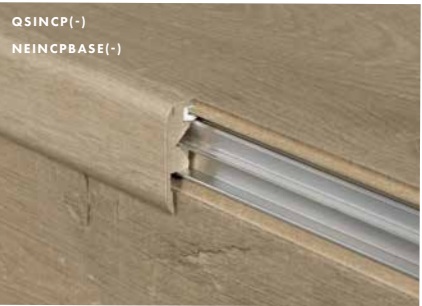
APPLICATION 4

Create a nice transition between your Laminate floor and other flooring types.



APPLICATION 5

The Incizo® profile also allows you to finish your stairs in the flooring design of your choice. For this application you need the Incizo® profile and an aluminium sub-profile.



INCIZO® ALUMINIUM SUB-PROFILE FOR STAIRS

215 x 7.1 x 2.0 cm



Finish in style

Finish in style

Metal profiles



METAL INCIZO® PROFILE

270 x 4.74 x 1.14 cm

Contents: 1 Incizo® profile, 1 handle, 1 plastic rail.
Silver profile also available in size 93 cm x 4.74 cm x 1.14 cm. Not compatible with 12 mm floors.



MULTIFUNCTIONAL PROFILE

186 x 4.7 x 1 cm

To bridge height differences up to 12.3 mm.

Finishing tools



KIT

310 ml

Fill up the space between skirtings and floor. Available in matching colours.

Average usage: 1 tube per 30 m² room.



PIPE COVERS

2 pcs/pack

Properly finish pipes and heating elements. Available in inside diameter size 15 mm and 22 mm.



DOORMAT

Frame: 79 x 47.8 cm
Doormat: 74.6 x 43.4 x 0.9 cm

An elegant way to prevent dust and dirt from entering.

Tools for a completely water-resistant finish



Use our Hydrokit and PE foam for a 100% water-resistant finish and get an additional 10-year warranty on residential installation in damp spaces. Compatible with Signature, Majestic, Impressive (Ultra), Eligna, Classic and Impressive Patterns.



EL3579



HYDROKIT

310 ml

Transparent silicone for an invisible and water-resistant skirting and profile finish.

Average use: 15m/tube.



PE FOAM

20 times 1 m x 10 mm

Fill up expansion joints with this waterproof solution for skirtings and profiles.

To be used in combination with the Hydrokit.

Worry-free maintenance

EASY MAINTENANCE FOR MAXIMUM VALUE
Quick-Step cleaning products are specifically developed for our floors. They cleanse the surface thoroughly and safeguard its original appearance to maximise that 'new floor' experience.
For detailed maintenance instructions, visit www.quick-step.com

Maintenance



CLEANING PRODUCT 2.5 L
Average usage: 37 cleaning sessions.



CLEANING PRODUCT 1 L
Average usage: 15 cleaning sessions.



CLEANING KIT
Mop holder with water tank and handy lever to easily moisten and mop your floor. Also includes a cleanable microfiber mop and one-litre of Quick-Step cleaning product.



CLEANABLE MICROFIBRE MOP



REPAIR KIT
Easily repair light damage in the original colour. It assures that your floor is protected again. Find detailed instructions at www.quick-step.com



Setting the stage for sustainability

Everyday, UNILIN – the company behind Quick-Step – pushes the boundaries of what it means to be a flooring brand. Apart from making our floors as beautiful and enduring as possible, we also strive to make them as sustainable as possible, and to minimise our ecological impact in every way we can. Just like you, we are convinced that a world of beauty is a world where we respect and treasure our natural resources.

“Sustainability has become indispensable for doing business. That’s why we strive to make our floors as sustainable as possible.”

TINO MULLE, CHIEF SUSTAINABILITY OFFICER AT UNILIN

This means we’re not just mindful of how we source our raw materials, but also how we provide energy for production. In many UNILIN factories, end-of-life wood waste is the primary energy source.

NO TREES WERE HARMED IN THIS PRODUCTION PROCESS

Did you know our laminate floors are entirely made from residues of the forestry and wood industry? By using leftover materials to create a new product, we actively lower the amount of carbon dioxide that’s released into the atmosphere. In fact, no tree is felled to create your new dream floor.

All our Laminate floors are also Ecolabel stamped. This means they adhere to the most stringent EU rules for indoor air quality, raw materials quality and sourcing, and workers health & safety.



THE CREDENTIALS OF OUR FLOORING

To provide you with maximum value, Quick-Step Laminate floors adhere to the most stringent quality and sustainability labels.



EU ECOLABEL

A label of environmental excellence awarded to products and services meeting high environmental standards throughout their lifecycle: from raw material extraction to production, distribution, use in your home and disposal at end-of-life.



PEFC

An internationally recognised label that ensures that the wood we use in our flooring comes from sustainable managed forests.



M1

The lowest possible emission class, indicating that our floors don’t emit any toxic substances and thus require no extra ventilation. It also means our products are odour-free.



A+

Best accreditation for indoor air quality.



NORDIC ECOLABEL

The official sustainability ecolabel for the Nordic countries.



FLOORSCORE EU

SCS certification program that demonstrates the floor’s conformity with the requirements for low-emission products.



EPD AVAILABLE

An independently verified and registered document that communicates transparent and comparable information about the lifecycle environmental impact of products.



A MEMBER OF THE EPLF

European Producers of Laminate Flooring.



LEED

Globally applied building classification programme for low-emission products.



SINGAPORE GREENLABEL

A seal of endorsement on environmentally-friendly claims to prevent the abuse of green-washing.

Your Quick•Step® point of sale



Quick•Step® is a quality product produced by UNILIN bvba – division Flooring, Ooigemstraat 3, B-8710 Wielsbeke, Belgium, Europe. Product images may differ from actual product. The availability of products, or the products themselves, may change at any time without notice. Content © 2019-2020 by UNILIN bvba – division Flooring. All rights reserved. The contents of this brochure may not be reproduced in whole or in part without prior written permission from the publisher. 019 115 01 - Z4B - EN.
Coverphoto: SIG4754

FOLLOW US ON

 www.facebook.com/QuickStepFloors

 www.youtube.com/quickstepfloor

 www.pinterest.com/quickstepfloor

 [@QuickStepFloor](https://twitter.com/QuickStepFloor)

www.quick-step.com