

Add colour in your life



Gerbür

Premium-Laminatboden

GERMAN TECHNOLOGY

FLOORING COLLECTION

Beethoven

Handel

Verdi

Wagner

Mozart



Gerbur first started producing laminate flooring in 1997. Today we enjoy the enviable position as one of the World's top Laminate Flooring Manufacturers enjoying enviable market positions throughout Europe, North America and Asia. We are proud that as a global player, we have customers and partners in approx 60 countries.

In Europe, our products are sold to consumers and professional contractors within the residential and commercial sectors. Main sales outlets are flooring and interior design centres stores, as well as home improvement stores.

Our advantage lies in the fact that we have the capacity of a corporate group while retaining flexibility to meet our customers needs. At Gerbur, innovation is a tradition. From our corporate headquarters in Germany we design, develop and manufacture high quality laminate flooring with unique and patented properties, using state-of-the-art technology for both home and commercial areas to withstand even the most demanding areas of traffic.

Innovative modern designs at the best possible price vs performance ratio.

Design and function, welcome to Gerbur

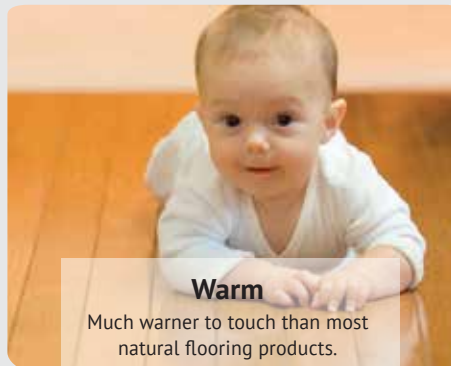


Why Gerbur

We design, develop and manufacture high quality laminate flooring with unique and patented properties, using state-of-the-art technology for both home and commercial areas to with-stand even the most demanding areas of traffic. Each of our integrated flooring and surface solutions caters to a very specific customer need because every customer is unique and has highly individual needs. Today across the world and day after day, people experience their lives at home, in public building, schools, hospitals, offices and during sports or leisure activities through a Gerbur floor.

No matter whether the project is public, commercial, residential or a sports facility installation, a new construction or a renovation project, it's the combination of our world wide expertise, our broad product portfolio across vinyl and laminate wood, as well as our intimate understanding of customer's needs that enables Gerbur to create those distinctive flooring experiences.

Innovative and modern designs at the best possible price vs performance ratio. *Design and function, welcome to Gerbur*



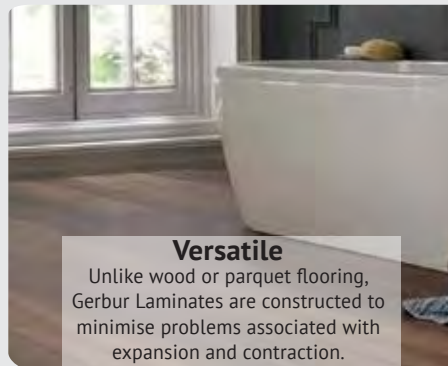
Warm

Much warmer to touch than most natural flooring products.



Individual

With over 100 standard products and a vast array of design components, you can create a truly individual floor.



Versatile

Unlike wood or parquet flooring, Gerbur Laminates are constructed to minimise problems associated with expansion and contraction.



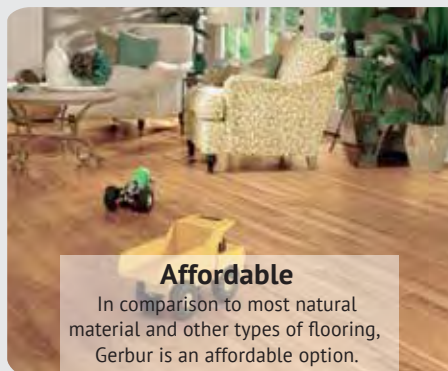
Hygienic

Gerbur is suitable in family environment as it will not harbour dirt and bacteria.



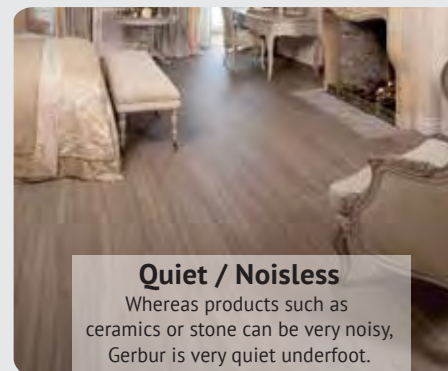
Durable

Gerbur will not splinter, chip or crack and is extremely hard wearing.



Affordable

In comparison to most natural material and other types of flooring, Gerbur is an affordable option.



Quiet / Noisless

Whereas products such as ceramics or stone can be very noisy, Gerbur is very quiet underfoot.



Low Maintenance

Gerbur is easy to maintain unlike natural products which may need sanding, polishing and repairing.



At Gerbur we pride ourselves in the realism of our laminate flooring and the *Verdi* collection is the ultimate in realistic look and feel of a real hardwood floor. From the seamless patented Uniclic joining system to the eased edges of the planks, the realism is further enhanced by our match registered embossing on the surface which follows the graining of the plank to further enhance the realism.

Finished in matt finish to imitate perfectly an oiled floor and to keep up with the increase in popularity of the oiled look for those discerning customers who don't want a high gloss shiny look, Verdi matt oiled finish is the floor of choice.

TECHNICAL DATA



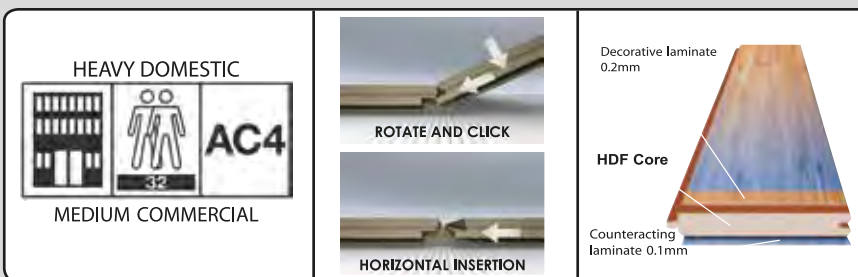
PROPERTY	INFO
Dimensions	1217mm x 147 mm x 12 mm
Package	10 pieces per carton = 1.79 m ²
Production	Direct faced laminate flooring / melamine impregnated paper / core high-density fibreboard made using 50% FSC timber TT-COC-1943 certified by BM TRADA under license
Laying	Must be layed as floating floor
Classification (BS EN 13329)	32: Heavy domestic use AC4: Medium commercial use
Warranty	20 Years Residential Warranty 10 Years Commercial Warranty

PRODUCT CHARACTERISTICS HDF-BASE

FACTOR	STANDARS	UNIT	NOMINAL VALUE
Formaldehyde content	EN 622-1	mg/100g	<8 (class E1)
24h swelling	EN 622-5	%	<17%
Bending strength	EN 622-5	N/mm ²	23
Internal bond	EN 622-5	N/mm ²	1
Moisture content	EN 622-1	%	4 to 11

PRODUCT CHARACTERISTICS OF LAMINATED FLOOR CORE-BOARDS CLASS: 32

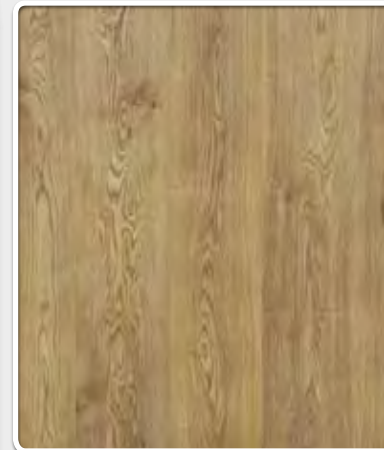
FACTOR	STANDARS	UNIT	NOMINAL VALUE
Abrasion	EN 1332	REV	AC 4: IP 4,000
Impact resistance	EN 1332	N & mm	≥ IC 2
Stain resistance	EN 438.2.15	Scale*	Group 1&2: 5 Group 3: 4
Edge swelling	EN 13329	%	≤ 18



NATURAL OAK OILED



www.gerbur.com



DESCRIPTIONS

Product Code	: JZ-GBVD001
Length	: 1217mm
Width	: 147mm
Thickness	: 12mm
Edging	: Bevelled
Surface texture	: Match Registered
Box size	: 3.34 m ²
Pack	: 24 pcs.

FEATURES

Natural Oak Oiled : Matt or oil finished Oak is an ever more popular choice in today's ever changing fashions of home decoration. The distinctive graining of oak along with our patented 'True-life' finish guarantees the highlighting of small knots and the graining of the wood. Each board is finished in such a way that even an expert in flooring would have difficulty in telling that this was a laminate floor.





DESCRIPTIONS

Product Code	: JZ-GBVD002
Length	: 1217mm
Width	: 147mm
Thickness	: 12mm
Edging	: Bevelled
Surface texture	: Match Registered
Box size	: 3.34 m ²
Pack	: 24 pcs.

FEATURES

Cappuccino Oak Oiled : Finished in coffee bean shading, Cappuccino Oak Oiled is the perfect floor for those that seek the beauty of oak but with more added warmth. The look and feel of the Verdi Collection is nothing short of astounding. It is the closest reproduction of real wood flooring we've made to date and for customers who desire real wood flooring with none of the disadvantages associated with real wood, Verdi collection is the perfect answer.



CAPPUCCINO OAK OILED



www.gerbur.com

EVENING OAK OILED



www.gerbur.com



DESCRIPTIONS

Product Code	: JZ-GBVD003
Length	: 1217mm
Width	: 147mm
Thickness	: 12mm
Edging	: Bevelled
Surface texture	: Match Registered
Box size	: 3.34 m ²
Pack	: 24 pcs.

FEATURES

Evening Oak Oiled : Designed to give a more mature, distressed look to the floor Evening Oak Oiled fuses together perfectly the aged oak appearance and the modernness of today's fashion led home decors with grey coloured decors and flooring being on the rise. The realism of this collection is further enhanced by bevelled at the edge of the planks. A stunning ultra modern yet aged looking floor.



REALISTIC
APPEARANCE



WARM
UNDER FOOT



ALLERGEN
FREE



RESISTANT TO
HIGH HEELS





DESCRIPTIONS

Product Code	: JZ-GBVD004
Length	: 1217mm
Width	: 147mm
Thickness	: 12mm
Edging	: Bevelled
Surface texture	: Match Registered
Box size	: 3.34 m ²
Pack	: 24 pcs.

FEATURES

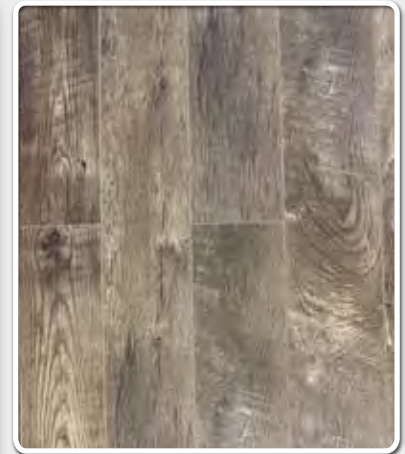
Merbau Oiled : Merbau has long been considered one of nature's most prized gifts in the terms of wood flooring production. The distinctive graining and subtle tones have long made Merbau a desired species of wood and now with the advancements in technology Gerbur can provide a floor that not only looks and feels like Merbau, but has none of the disadvantages associated with installing exotic real wood parquet flooring.



OLD DARK RUSTICAL



www.gerbur.com



DESCRIPTIONS

Product Code	: JZ-GBVD005
Length	: 1217mm
Width	: 147mm
Thickness	: 12mm
Edging	: Bevelled
Surface texture	: Match Registered
Box size	: 3.34 m ²
Pack	: 24 pcs.

FEATURES

Old Dark Rustical: In keeping up with the ever changing facets of today's design led interiors, Gerbur brings you a floor that looks fantastic and feels great due to its match registered technology. Old Dark Rustical has enhanced realism due to the embossing of the saw cuts and distressed markings which means the graining and the floor itself comes to life. A great floor at unbelievable value.





DESCRIPTIONS

Product Code	: JZ-GBVD006
Length	: 1217mm
Width	: 147mm
Thickness	: 12mm
Edging	: Bevelled
Surface texture	: Match Registered
Box size	: 3.34 m ²
Pack	: 24 pcs.

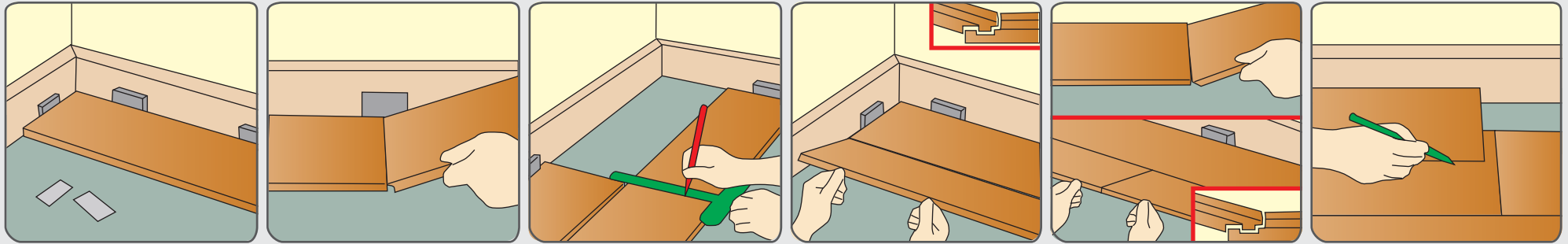
FEATURES

White Washed Rustical: A fantastic floor finished in today's modern colour silver. The demand for White Washed Rustical has been phenomenal since this decor was first introduced. Appealing to both the eye and the touch, the rustical finish is achieved by a special process of enhancing the depth of the saw markings with match registered technology. A beautiful, low maintenance floor that will keep its good looks for decades to come.



www.gerbur.com

Laminate Installation Guide



Tips and tricks on how you can quickly and easily install your laminate floor from Gerbur®

Please first read through the entire installation guide for your new laminate floors. Follow these instructions exactly in order to maintain the full warranty and guarantee claims. Check the laminate panels carefully for damage before you begin. Once panels have been handled, they will no longer be covered under damage claims.

Before installation

- Leave cartons of laminate flooring in the same climatic conditions as the room they are going to be installed in for at least 48 hours.
- An important precondition for the installation and conservation of value of the laminate floors is a room temperature of approximately 20 degrees Celsius and a relative humidity of 50 to 70 per cent.
- The subfloor must be absolutely even, dry, clean and able to carry a load.
- If installing over a mineral subfloor such as concrete, cement, anhydride screed or stone tile, you must first measure the humidity using a CM-device. The following values should not be exceeded by the stone floor:
 - Cement screed: With underfloor heating 1.8 per cent CM; without underfloor heating 2 per cent CM.
 - Anhydride screed: With underfloor heating 0.3 per cent; without underfloor heating 0.5 per cent CM.
- Before installing laminate over mineral substrate, you must first lay down an appropriate vapour barrier film trough-like ("floating") to protect against moisture. The sheeting should overlap by at least 20cm and seams should be secured with masking tape.
- A carpeted floor is not an appropriate subfloor; all carpet must be removed thoroughly before installation. Laminate floor should be laid trough-like; the laminate may not be affixed to the subfloor.
- For floors without footfall sound insulation we advise that you do install a sound insulation such as a 2mm thick PE film underlay or another suitable underlay that is a maximum of 3mm thick.
- Lay rows in the same direction as the laminate panels.
- Opened cartons should be installed immediately.

Generally you have three laminate floor installation options:

- Adhesive-free, quick installation
- Installation with Clickguard or a comparable joint sealant. This way the floor is protected from the top down for the long-term against moisture damage. Yet the sealed panels can still be taken up and laid again later.
- Installation with adhesive likewise provides long-term protection against moisture damage; however the work is costlier and disassembly for a second installation of the floor is no longer possible

Accessories & Underlay

At Gerbur we offer our customers a complete range of accessories "from a single source", sparing them the difficulty of dealing with a variety of suppliers and thereby saving valuable time. Each flooring solution is provided to finish around the perimeter of the room where expansion gaps are left on installation. T-Molding, Reducers and End Caps provide a perfect finish against existing floors and walls whilst stair nosing's creating a strong reliable edging to each stair nose.



Skirting

Thickness : 15 mm
Width : 90 mm
Length : 2400 mmm
Pack : 10 pieces

Available in 10 colours



T-Moulding

Thickness : 8 mm
Width : 45 mm
Length : 2400 mmm
Pack : 20 pieces

Available in 10 colours



Reducer

Thickness : 12 mm
Width : 45 mm
Length : 2400 mmm
Pack : 20 pieces

Available in 10 colours



End Cap

Thickness : 15 mm
Width : 45 mm
Length : 2400 mmm
Pack : 20 pieces

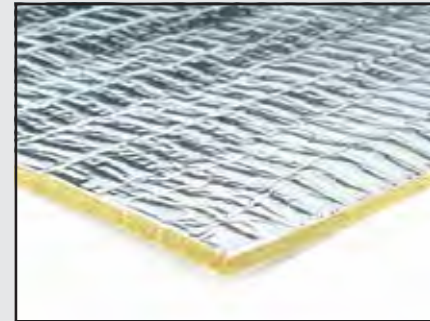
Available in 10 colours



Stair Nosing

Thickness : 18 mm
Width : 55 mm
Length : 2400 mmm
Pack : 20 pieces

Available in 10 colours



High density resilient sponge rubber underlay specially formulated for laminate floors.

- Timbermate 3mm rubber underlay, suitable for both domestic and contract applications.
- Offers exceptional acoustic performance for comfort, support, and acoustic reduction of up to 22db.
- Made from 100% natural rubber with non-toxic and non-dusting materials.
- For use under floating laminate, solid timber and engineered wooden floors.
- Excellent moisture resistance when used in conjunction with Vapourtape or vapourstop sealing strip.
- Guaranteed for the serviceable lifetime of the laminate floor.



Gerbur 2mm foam underlay

Gerbur 2mm foam underlay is ideal for use with laminate or wood flooring. The 2mm thickness P.E poly foam underlay offers some sound reduction and thermal insulation, but doesn't come with a built in Damp Proof Membrane. This underlay is ideally used over wood or chipboard subfloors.

Skirting

Cleaning and Maintenance...

One of the advantages of floors from Gerbur is that they are easy to keep clean and beautiful. To make cleaning even easier, Gerbur offers you cleaning products specially made for laminate floors. By following the simple advice given here, you can keep your Gerbur floor looking good for many years to come.

Lift don't drag. Laminate floors are scratch resistant, but not scratch proof, so never drag or push heavy furniture or appliances across laminate floors. Instead, use a dolly or hand truck to move heavy items or lift and carry them.

Use door mats and consider a no-shoes policy. Dirt, gravel and other abrasive materials on the soles of shoes can take a toll on laminate floors over time. Therefore, be sure you have door mats at all entrance doors so that shoes can be cleaned thoroughly whenever anyone enters your home.

Pets

Keep pets nails trimmed. If you have dogs and/or cats, keep their nails trimmed to avoid scratches to the surface of laminate floors.

Vacuum clean or sweep the floor using a dry mop to remove dirt and dust. When necessary, use a slightly dampened cloth.

Marks from water show up more clearly on a gloss surface. Therefore always dry the floor with a dry mop after cleaning.

A greasy residue can form if you have cleaned the floor in the incorrect way, for example, by using too much household cleaner or soap. To remove this film, spray an ample amount of Spray Cleaner over the whole floor and wait a few minutes for this cleaning agent to dissolve the dirt or grease.

Wipe the floor with a damp cloth and then dry the floor off with a dry mop. If necessary, repeat these steps until the dirt or greasy film has been removed.

These floors are susceptible to the accumulation of water in the grooves created by the bevelled edges. Therefore, never wet mop a floor with bevelled edges. Regular cleaning can be done using a slightly damp and carefully wrung out mop, making sure that no water accumulates along the bevelled edges. Always dry off the floor after cleaning.

1. Chocolate, grease, juice, cordials, wine

Add warm water to Simple Solutions Spray Cleaner

2. Tar, crayon, lipstick, shoe polish, ink, carbon, nail polish or cigarettes

Methylated spirits, acetone or household solvent, petroleum spirit

3. Candle wax and chewing gum

Allow to harden, then carefully scrape off



German Standard
Laminate Flooring

Samples swatches have been cut from an overall design, therefore decoration and shade may vary. The random nature of wood and other natural material, from which our designs are taken, means that significant colour and design variation is normal and indeed enhances the natural look of Gerbur Products.

We strongly advise that before ordering material, you see a physical sample of your chosen products.

Whilst every care has been taken in the printing of this brochure, the colours shown are only as accurate as the printing process will allow.

The policy of the company is one of continuous development and improvement. We reserve the right to add or delete products from the range or to change patterns and/or textures without prior notification.

Gerbur owns copyright and protection on all designs.

Copyright 2014 Gerbur All rights reserved



Supplying all the UAE, GCC Countries & Middle East

Tel : +971 04 8895 661

Email : info@gerbur.com

Toll free: 800 FLOOR (35667)

Website: www.gerbur.com

Oasis Centre, 2nd Level : Sheikh Zayed Road Dubai

Marina Showroom : MAG 218 Tower, Dubai Marina

Oud Metha Showroom : Zabeel Building, Oud Metha, Dubai

Head Office : Jebel Ali Industrial Area 3, Dubai

To remain market leader in the growing global usage of affordable design flooring.

Beethoven

Wagner

Handel

Mozart

Verdi