

Vision

100% WATERPROOF



About Gerbür

Design and Function, Welcome to Gerbür

Gerbür first started life as a collaboration by a group of German design students. Within two decades Gerbür has grown exponentially, supplying flooring solutions to over 60 countries.

Gerbür first started producing laminate flooring in 1997. In 2005 our second production facility, specialising in the growing market sector of luxury vinyl tiles (LVT) was operational. Today we enjoy the enviable position as one of the World's top Laminate and LVT flooring manufacturers, producing in excess of 30 million square metres annually. Enjoying enviable market positions throughout Europe, North America and Asia, we are proud that as a global player, we have customers and partners in over 60 countries.

In Europe, our products are sold to consumers and professional contractors within the residential and commercial sectors. Main sales outlets are flooring and paint stores, as well as home improvement stores.

Our advantage lies in the fact that we have the capacity of a corporate group while retaining flexibility to meet our customers needs and increase revenue flow. Services offered include exclusive dealer territory and own brand custom packaging. Kindly contact us to discuss your requirements.

Innovation is a tradition for us, key international partnerships is our future.



**a satisfied
customer
is our best
business
strategy**

Why Gerbür

Waterproof surface

Gerbür Vinyl plank flooring are 100% waterproof. Together with the Aqua Sealing Complete system, which covers the bevels, the floor is rendered watertight. This makes your flooring impervious to everyday spills and drops.



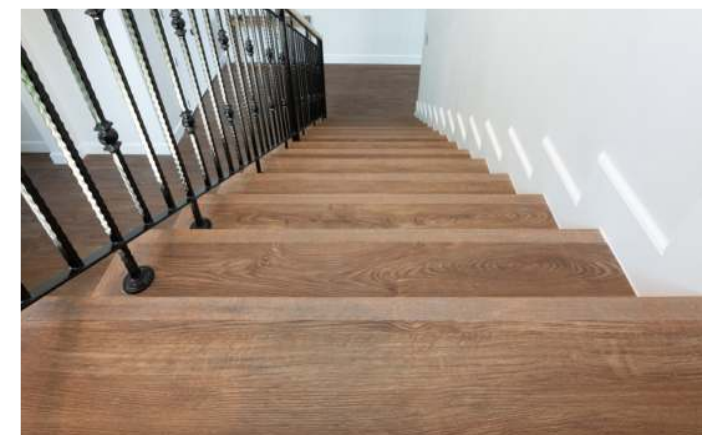
A stunning Collection

A stunning collection of high quality floors with the natural beauty and durability of wood and stone flooring, yet with all the practical benefits of luxury vinyl tiles.



A Real Wood Effect

Gerbür Vinyl plank floors are a contemporary marvel that give a high-end vinyl flooring product that may seem to be authentic wood flooring in a huge array of styles, effects, and patterns.



Beauty and Elegance

There is a reason Gerbür has endured—it offers both beauty and elegance in equal measure. This classic style rewards the diverse beauty of woods and stone, making it suitable for both conventional and modern business settings.

Discover our
passion for...



Certified Product

All Gerbür flooring are FSC certified, indicating that they satisfy the criteria of the standards.



Passion

Working hard for something we love is called passion.



Warranty

Gerbür floors are warranted to stay looking amazing for 10, 15, 20 years!

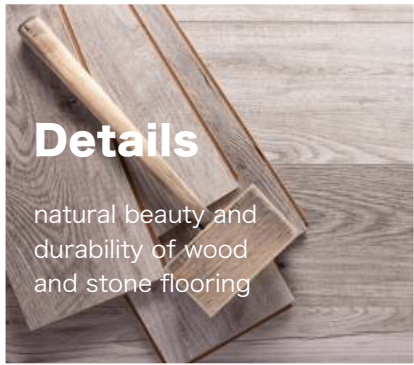
Protection

Maintenance free, waterproof and highly durable flooring!



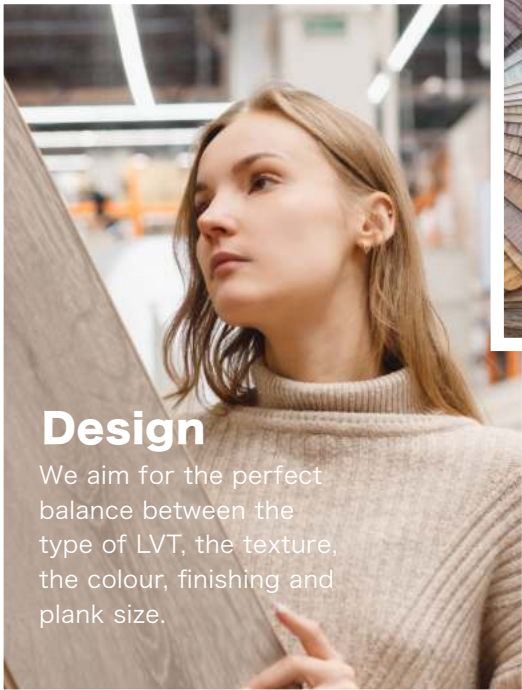
Details

natural beauty and durability of wood and stone flooring



Design

We aim for the perfect balance between the type of LVT, the texture, the colour, finishing and plank size.



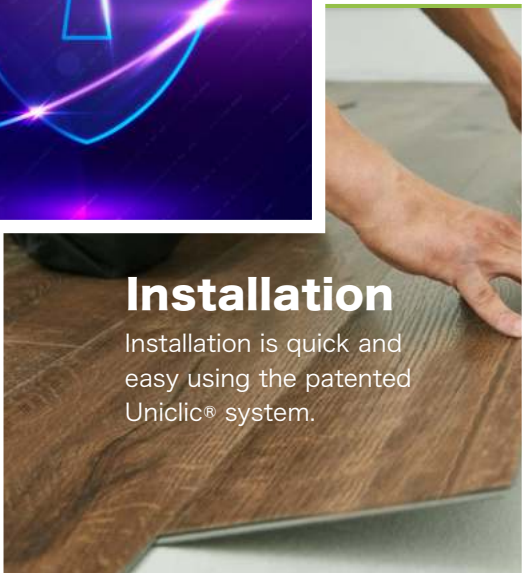
Authenticity

Each tile has a distinct colour due to the use of various processes like as fuming and special staining. As a result, we obtain a dynamic colour variation between the tiles, giving the appearance of natural stone.



Installation

Installation is quick and easy using the patented Uniclic® system.



Kid-Friendly

Kid-Friendly! Crayons, paint and permanent markers easily wipe off.

Enhance
your living
space with
the shades
and tones of
the natural
world.

Pick your favorite colour

Smooth Almond
HK-GBVS001



Pecan
HK-GBVS002



Chestnut
HK-GBVS003



Crushed Walnut
HK-GBVS004



Pistachio
HK-GBVS005



Lemongrass
HK-GBVS008



Coriander
HK-GBVS011



Oregano
HK-GBVS012



Flax
HK-GBVS013



White Pepper
HK-GBVS014



Manufactured
with natural,
**environmentally
friendly**
sustainable
materials which
are **100%
recyclable**



ViSiON

That sought-after real wood flooring effect can be expensive to purchase and costly to maintain. Gerbür Vision offers a superb natural effect, incredible durability, and excellent value for money. The premier top-of-the-range luxury vinyl tile available in the marketplace, Gerbür Vision is a truly remarkable floor covering that not only looks and feels fantastic to the touch, but the numerous advantages over real wood flooring are also extensive. Unlike wood flooring or laminated flooring, Gerbür Vision can be installed in wet areas like kitchens and bathrooms with minimum maintenance. Installed as a floating floor, no adhesive is required. The floor can be dismantled and installed many times, making it the perfect environmentally sustainable product. Gerbür Vision is manufactured with natural, environmentally friendly sustainable materials which are 100% recyclable and conforms to all regulatory requirements of commercial flammability codes, slip resistant requirements, certified for low VOC emissions for safer indoor air quality and a host of other safety codes. Waterproof and low maintenance, Gerbür Vision has been crafted to withstand the toughest environments from a child's nursery to a busy hotel entrance, ensuring no stiletto heel marks or unsightly scratches, a floor that will stay looking great for decades.

Technical Data

Thickness (mm)	5.00	Chemical Resistance	EN423	High Resistance
Wear Layer (mm)	0.55	Residual Indentation	EN433	≤ 0.08mm
Utilization Class		Dimensional Stability	EN434	≤ 0.08%
Coating	PU with DiamondShield™	Colour Fastness to Light	EN20105-B02	≥ 6
Embossing	Real wood Texture	Abrasion Resistance	DIN51130	R11
Bevelled	Yes, micro bevel	Water Resistance	EN13553	100% Water Proof
Fiberglass	Yes	Wear Resistance	EN660-2	Group T
Plank Size	180mm x 1220mm	Antimicrobial Activity	ASTMG 21-96	Class 0
Sqm Per Pack	1.757	Fire Rating	EN ISO 9239-1	Bfl - S1
Pallet Packing	131.775 / 75 packs	Warranty for Domestic use		20 Years
Impact Sound Insulation ISO 717-2	5 dB	Warranty for Commercial use		10 Years



Smooth Almond

HK-GBVS001

The creamy whiteness coupled with the exceptional durability make Smooth Almond a floor for the fashion aficionados who love clean white lines in their interior space



Pecan

HK-GBVS002

An exact replica of white-washed European Oak, Pecan brings a warm neutral tone with the added benefit of ease of maintenance to enhance and add value to any interior.



Chestnut

HK-GBVS003

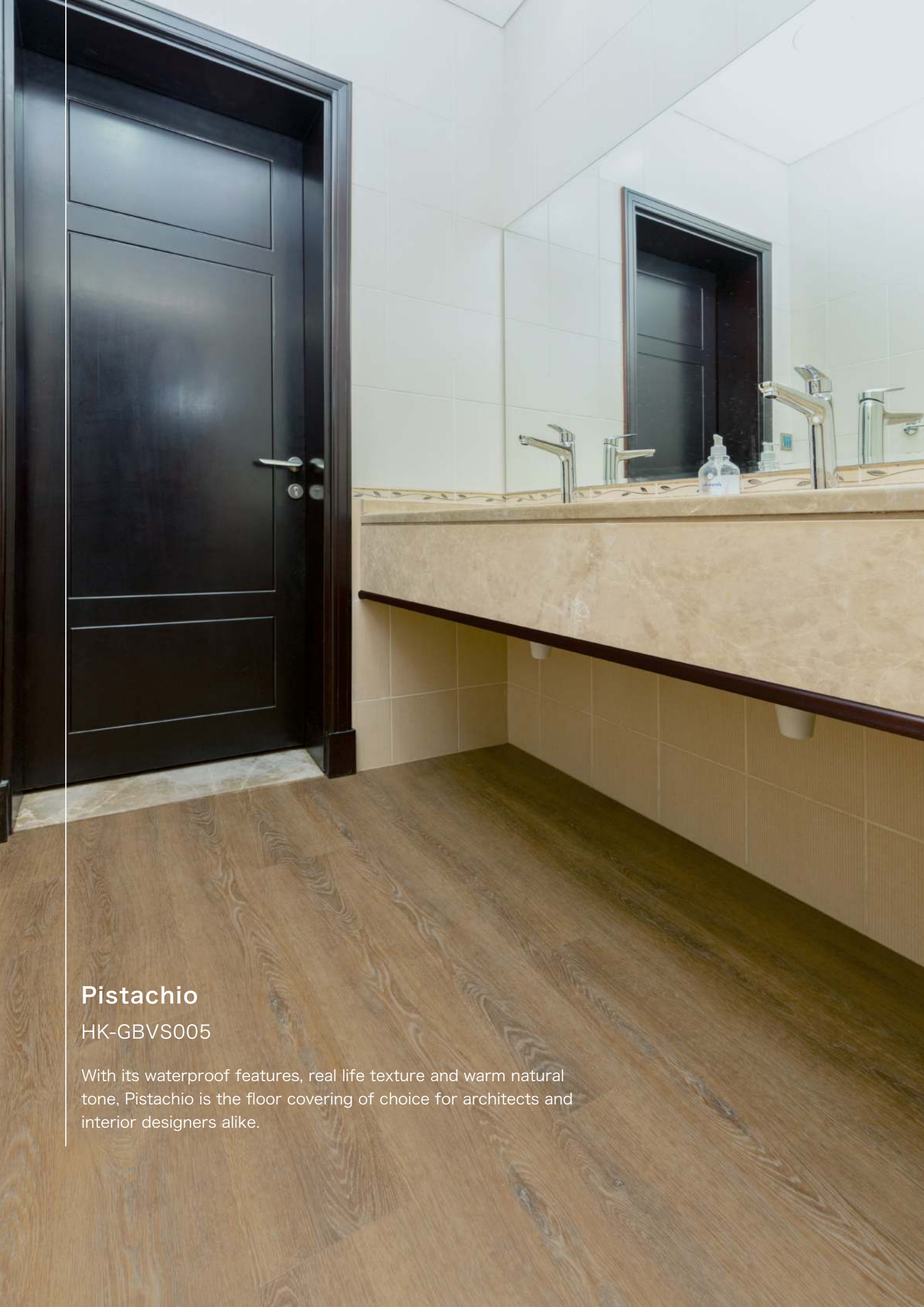
Roasted Chestnut was the direct inspiration for this stunning floor. Sultry and dark with registered emboss texture to perfectly replicate a real wood floor.



Crushed Walnut

HK-GBVS004

Crushed Walnut combines the elegance of contemporary wooden flooring with the exceptional durability achieved through advanced modern manufacturing techniques.



Pistachio

HK-GBVS005

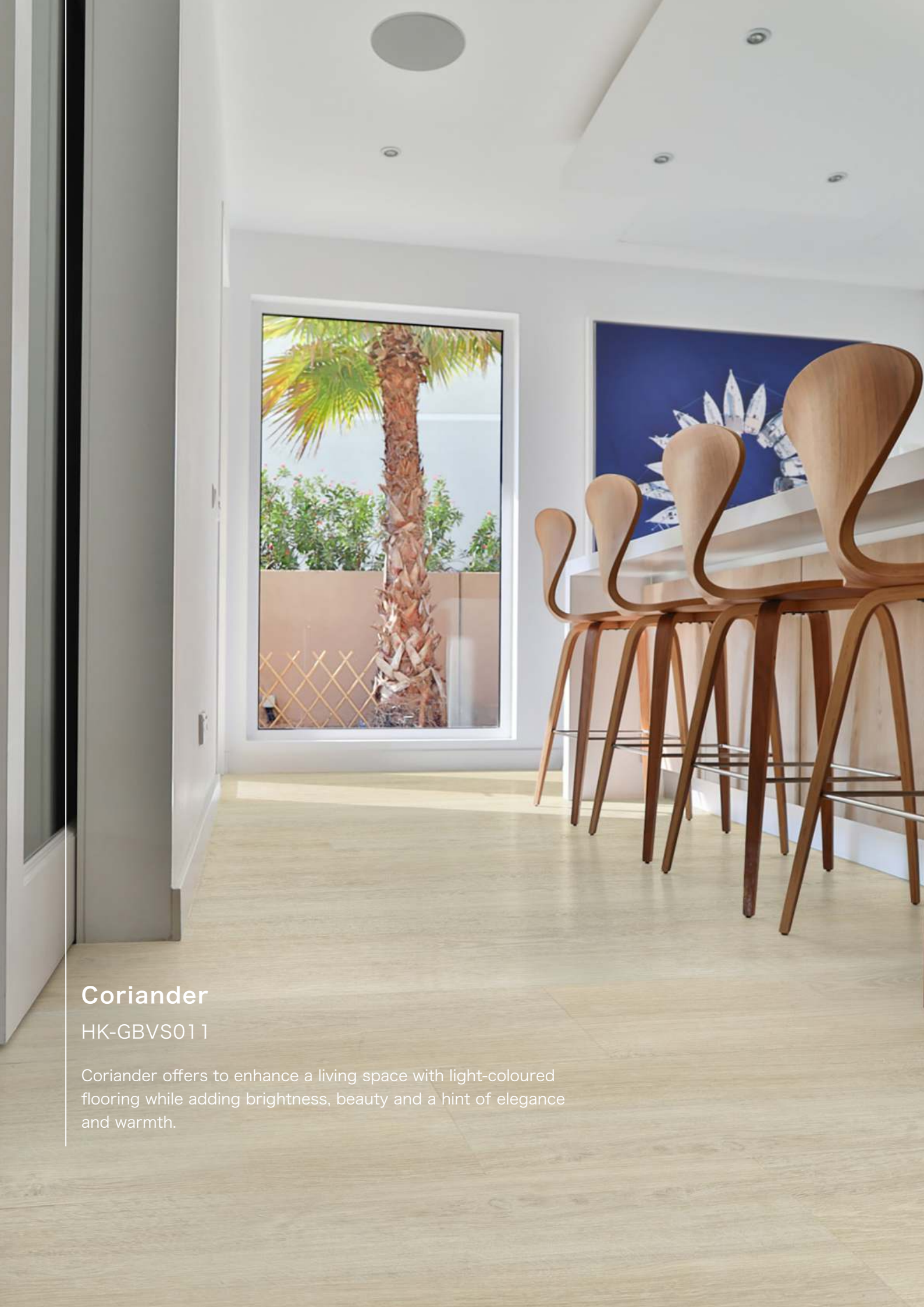
With its waterproof features, real life texture and warm natural tone, Pistachio is the floor covering of choice for architects and interior designers alike.



Lemongrass

HK-GBVS008

With our modern grey overtone, Lemongrass offers timeless elegance. Cross-cut saw-cuts further add to its appeal and desirability.



Coriander

HK-GBVS011

Coriander offers to enhance a living space with light-coloured flooring while adding brightness, beauty and a hint of elegance and warmth.



Oregano

HK-GBVS012

With the depth and realism of wood grain, Oregano brings natural warmth and timeless allure to every corner.



Flax

HK-GBVS013

Experience contemporary sophistication and details in grey with Flax, blending modern aesthetics and easy maintenance.



White Pepper

HK-GBVS014

White Pepper offers subtle charm with its lighter tone, brightening up any space. The trendy aesthetic not only adds to the visual appeal but also creates an inviting interior.

Accessories

Once your floor has been fitted you can really see the impact a new LVT flooring has on your living spaces. However, without the addition of door bars or beading, it can still look unfinished. You really can get more out of your floor with Gerbur accessories – not only do they add that final flourish to the look of your floor, they also add extra protection against accidental damage. At Gerbur we offer all the accessories you need to get the perfect flooring finish. From adhesives which secure your floor to the sub-floor, to decorative door bars and stair nose, you'll find them in store and online. For more information on flooring accessories visit our friendly advisers in our local stores.

Investing in flooring accessories will:

- add the finishing touches to your rooms
- help to keep your flooring secure and looking great
- bridge gaps between rooms and flooring types for a seamless transition
- provide extra protection for your floor

Gerbur stock a range of flooring accessories for vinyl, laminate and luxury vinyl tiles. Getting the right accessories for your floor will ensure you get the perfect finish every time. It is easy to get confused, so make sure you get the right accessory for your needs.



Skirting

AVAILABLE COLOURS	21 colours
FINISH	Gloss
RANGE	Skirting
THICKNESS	15mm
TYPE	Beading
EFFECT	Wood Effect
FLOOR TYPE	Laminate Floor
INSTALLATION	Glue Down
DESCRIPTION	Gerbur Accessories -2400mm x90mmx 15mm



Beading

AVAILABLE COLOURS	21 colours
FINISH	Gloss
RANGE	Beading
THICKNESS	12mm
TYPE	Beading
EFFECT	Wood Effect
FLOOR TYPE	Laminate Floor
INSTALLATION	Glue Down
DESCRIPTION	Gerbur Accessories - 28mm x 2400mm x 12mm



Stair Nosing

AVAILABLE COLOURS	21
FINISH	Gloss
RANGE	Stiar Nosing
THICKNESS	15mm
TYPE	Door Bars/ Trims
EFFECT	Wood Effect
FLOOR TYPE	Laminate Floor
INSTALLATION	Glue Down
DESCRIPTION	Gerbur Accessories - 55mm x 2400mm x 15mm



Reducer

AVAILABLE COLOURS	21
FINISH	Gloss
RANGE	Reducer
THICKNESS	12 mm, 8 mm
TYPE	Door Bars / Trims
EFFECT	Wood Effect
FLOOR TYPE	Laminate Floor
INSTALLATION	Glue Down
DESCRIPTION	Gerbur Accessories - 46mm x 2400mm x 12mm Gerbur Accessories - 46mm x 2400mm x 8mm



T Bar

AVAILABLE COLOURS	21
FINISH	Gloss
RANGE	T Bar
THICKNESS	12mm
TYPE	Door Bars / Trims
EFFECT	Wood Effect
FLOOR TYPE	Laminate Floor
INSTALLATION	Glue Down
DESCRIPTION	Gerbur Accessories - 46mm x 2400mm x 12mm



EVA Flooring Underlay

- Doesn't absorb water.
- Reduce noise transfer in mulit-layered buildings.
- Stops heats-cold transfer from and to the laminate floor.
- Non-poisonous and chemical resistant.
- Under which it is laid when used in the recommended locations.

TECHNICAL SPECIFICATION

Roll Size: 18.6m2 per roll

PROPERTIES	UNIT	VALUE	TEST METHOD
THICKNESS	mm	2.0	ASTM D-792
DENSITY	g/cm3	0.16	ASTM D-792
CELL SIZE	mm	0.56	ASTM D-3576
THERMAL CONDUCTIVITY	w/m.c/w°	0.0812	ASTM D-5930
THERMAL RESISTANT	m2° c/w	0.0572	ASTM C-167
TENSILE STRENGTH	kg/cm2	5.4 3.2	ASTM D-638
ELONGATION	%	110 110	ASTM D-638
HEAT DIMENSIONAL STABILITY	%	+4 - 4	ASTM D-6289
WATER ABSORPTION	mg/cm2	0.017	ASTM D-570
MOISTURE PERMEABILITY	g/cm2.24hr	0.48	ASTM D-570
TEARING STRENGTH	kg/cm	2.10	CCS METHOD
THE PERMANENT COMPRESSION SET (100 KG/CM2)	%	7	CCS METHOD



Deap clean solutions



Vinyl Floor Cleaner

Gerbür Vinyl Floor Cleaner an intensive antistatic cleaner recommended for cleaning vinyl flooring. The antistatic emulsion helps the absorption and prevention of dust build-up. Further more Gerbür Vinyl Floor Cleaner contains special nanoparticles which guarantee to the treated surfaces a deep cleaning and a long lasting action.



Design and Function, welcome to Gerbür

www.gerbur.com