

Gerbur Vinyl Floor Maintenance Guide

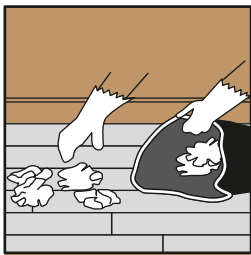
This maintenance guide is applicable for all Gerbur click and glue down LVT and SPC products



To ensure your Gerbur LVT or SPC floor is kept looking clean and fresh, Gerbur have developed a multi-purpose Vinyl Floor Cleaner. The antistatic emulsion helps the absorption and prevention of dust build-up. Furthermore, Gerbur Vinyl Floor Cleaner contains special nanoparticles which guarantee to the treated surfaces a deep cleaning and a long-lasting action. Rinse free, it does not leave halos, assuring a fresh scent in the air even in the presence of pets.

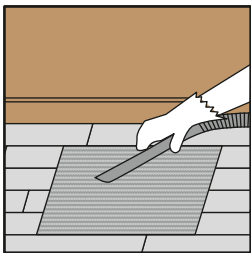
Before using Gerbur Vinyl Floor Cleaner ensure you

- Collect litter and debris with dustpan and brush
- Vacuum entrance mats to remove sand, gravel or grit that may damage the floor

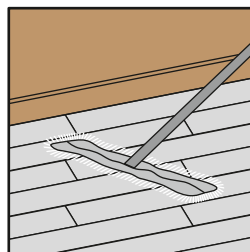
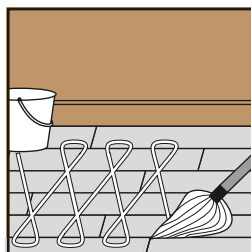
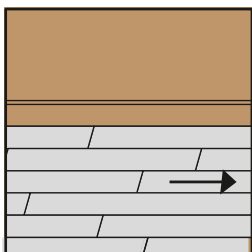


Daily cleaning: dilute 3 caps into 1 L of water

Weekly cleaning: dilute 6 caps into 1 L of water



- Prepare a solution of Gerbur Vinyl Floor Cleaner diluted as above
- Submerge the mop into the solution then ensure to expel all excess water before applying to the floor
- Mop using overlapping strokes
- Rinse the mop into the solution frequently
- Allow entire floor area to dry thoroughly



Intensive domestic cleaning:

You can dilute 1 part cleaner to 4 parts water into the bottle of a micro fibre spray mop and proceed to clean the floor, if you do not have a spray mop, a standard spray bottle can be used to apply the solution directly to the floor before cleaning with a micro fibre cloth or mop.

Gerbur Vinyl Floor Maintenance Guide

This maintenance guide is applicable for all Gerbür click and glue down LVT and SPC products



TIPS

Tips and tricks for looking after your Gerbür LVT and SPC floor to ensure you do not invalidate your warranty

- Protect the bottom of furniture and chair legs with strong felt pads to prevent scratching the floor
- Ensure to always lift heavy furniture when moving, never drag across the floor as this may cause damage
- Avoid bringing dirt, water and sand indoors by providing a suitable doormat at all external entrances
- With office applications, use chairs and seats with soft casters that are suitable for vinyl flooring or use a suitable desk floor mat
- In the event of a water escape where the water has gone underneath the flooring, the flooring must be removed within 24 hours and allowed to dry naturally, the subfloor must also be completely dry before the flooring is reinstalled. If you have used the 2mm EVA underlay and it has gotten wet, it is highly recommended to replace the underlay to avoid mould or odours forming.
- Always keep rooms at an ambient temperature, wherever possible this should be between 18-26 deg, sudden changes in temperature from cold to hot and vice versa can cause damage to your floor.
- The use of steam cleaners is not recommended on any Gerbür LVT or SPC floor.
- If Gerbür Vinyl Floor Cleaner is not available, then only a PH neutral floor cleaner can be used as a substitute
- If you are in any doubt in how to care for you Gerbür floor please consult directly with your local Gerbür agent/retailer