

# AQUA-CLICK

100% WATERPROOF FLOORING

15 YEARS  
RESIDENTIAL  
WARRANTY

floor  
score

CERTIFIED BY  
SCS Global Services

  
**Gerbur**  
Global Flooring Solutions







**a satisfied  
customer  
is our best  
business  
strategy**

## About Gerbür

### Design and Function, Welcome to Gerbür

Gerbür first started life as a collaboration by a group of German design students. Within two decades Gerbür has grown exponentially, supplying flooring solutions to over 60 countries.

Gerbür first started producing laminate flooring in 1997. In 2005 our second production facility, specialising in the growing market sector of luxury vinyl tiles (LVT) was operational. Today we enjoy the enviable position as one of the World's top Laminate and LVT flooring manufacturers, producing in excess of 30 million square metres annually. Enjoying enviable market positions throughout Europe, North America and Asia, we are proud that as a global player, we have customers and partners in over 60 countries.

In Europe, our products are sold to consumers and professional contractors within the residential and commercial sectors. Main sales outlets are flooring and paint stores, as well as home improvement stores.

Our advantage lies in the fact that we have the capacity of a corporate group while retaining flexibility to meet our customers needs and increase revenue flow. Services offered include exclusive dealer territory and own brand custom packaging. Kindly contact us to discuss your requirements.

Innovation is a tradition for us, key international partnerships is our future.



# Why Gerbür



## Waterproof surface

Gerbür Vinyl plank flooring are 100% waterproof. Together with the Aqua Sealing Complete system, which covers the bevels, the floor is rendered watertight. This makes your flooring impervious to everyday spills and drops.

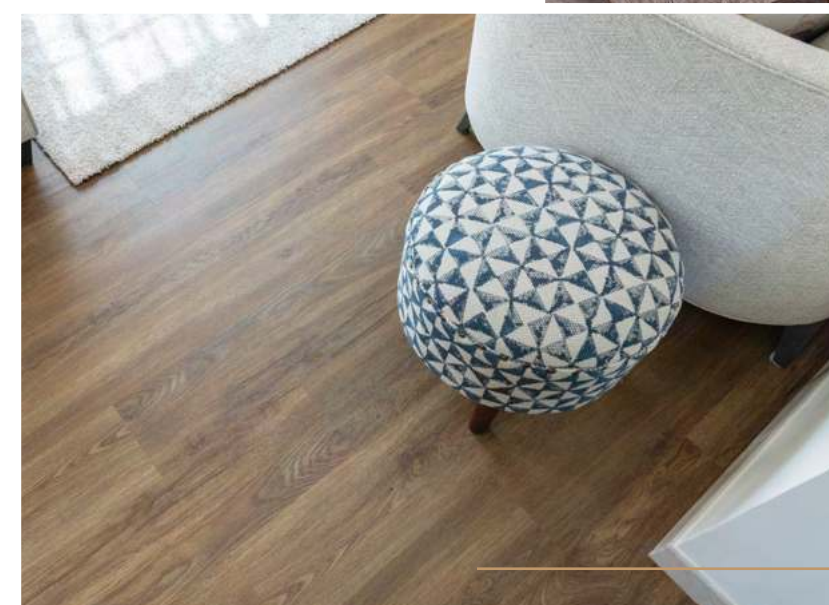


## A stunning Collection

A stunning collection of high quality floors with the natural beauty and durability of wood and stone flooring, yet with all the practical benefits of luxury vinyl tiles.

## A Real Wood Effect

Gerbür Vinyl plank floors are a contemporary marvel that give a high-end vinyl flooring product that may seem to be authentic wood flooring in a huge array of styles, effects, and patterns.



## Beauty and Elegance

There is a reason Gerbür has endured—it offers both beauty and elegance in equal measure. This classic style rewards the diverse beauty of woods and stone, making it suitable for both conventional and modern business settings.



Discover our  
**passion for...**



**Certified Product**

All Gerbur flooring are FSC certified, indicating that they satisfy the criteria of the standards.



**Passion**

Working hard for something we love is called passion.

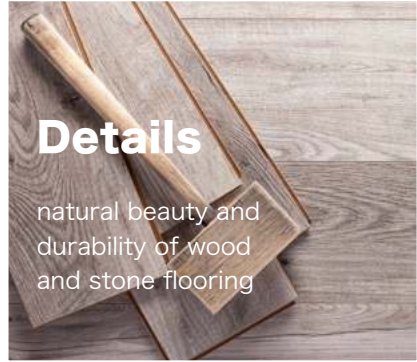


**Warranty**

Gerbür floors are warranted to stay looking amazing for 10, 15, 20 years or even lifetime!

**Details**

natural beauty and durability of wood and stone flooring



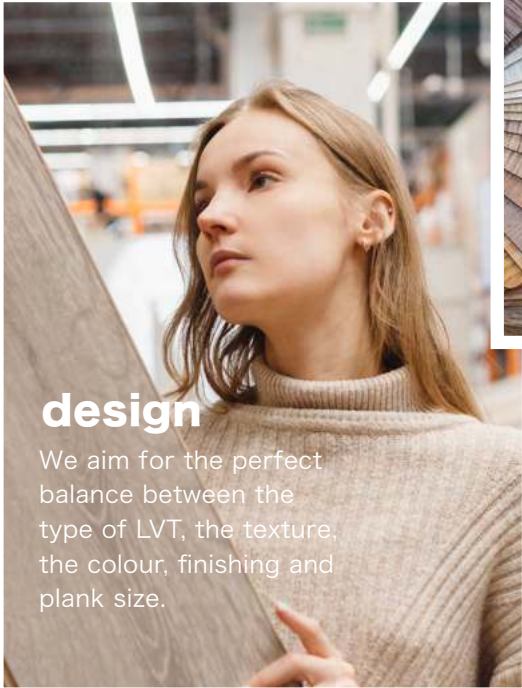
**Protection**

Maintenance free, waterproof and highly durable flooring!



**design**

We aim for the perfect balance between the type of LVT, the texture, the colour, finishing and plank size.



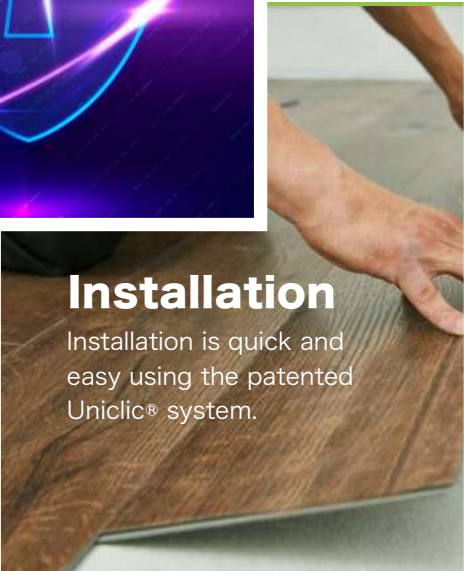
**Authenticity**

Each tile has a distinct colour due to the use of various processes like as fuming and special staining. As a result, we obtain a dynamic colour variation between the tiles, giving the appearance of natural stone.



**Installation**

Installation is quick and easy using the patented Uniclic® system.



**Child Proof**

Child proof! Crayons, paint and permanent markers easily wipe off.





**Enrich your  
living space  
with the  
shades and  
tones of  
the natural  
world.**

## **Pick your favorite colour**

Washed Oak  
JIN-GBAC-01



Ash Grey  
JIN-GBAC-02



Lime Tree  
JIN-GBAC-03



Cotton Wood  
JIN-GBAC-04



Nutmeg  
JIN-GBAC-05



Iron Spruce  
JIN-GBAC-06



Jarrah  
JIN-GBAC-07



Rosewood  
JIN-GBAC-08



Silver Spruce  
JIN-GBAC-09



Mulled Oak  
JIN-GBAC-10






**100%  
waterproof  
floor  
covering**

# 100% WATERPROOF FLOORING AQUA-CLICK

**Vinyl plank flooring is one of the most popular flooring types today for several reasons. It's low-maintenance, water-resistant, durable and cost-effective flooring.**

Visually and to the touch, it is almost impossible to tell that Gerbür Aqua-Click is not a real wooden floor due to its incredibly realistic wood grain surface. This means you can have the effect of natural stylish real wood with none of the disadvantages. Manufactured from 100% virgin PVC, meaning it is not only visually stunning, but it is also extremely durable and 100% waterproof. Installed as a floating floor, Aqua-click simply clicks together very quickly and easily using the patented Uniclick locking system, and at only 4mm overall thickness it is a perfect floor for renovations or placed over any flat and level subfloor. With Diamondshield™ scratch-resistant surface Gerbür Aqua-click LVT flooring has been crafted to withstand the toughest environments from a child's nursery to a busy hotel foyer. No stiletto heel marks or indentations like real wood or unsightly. That sought-after real wood floor look can be expensive to install and costly to maintain. Gerbür Aqua-click offers superb natural effect, incredible durability, and excellent value for money.

## TECHNICAL DATA SHEET

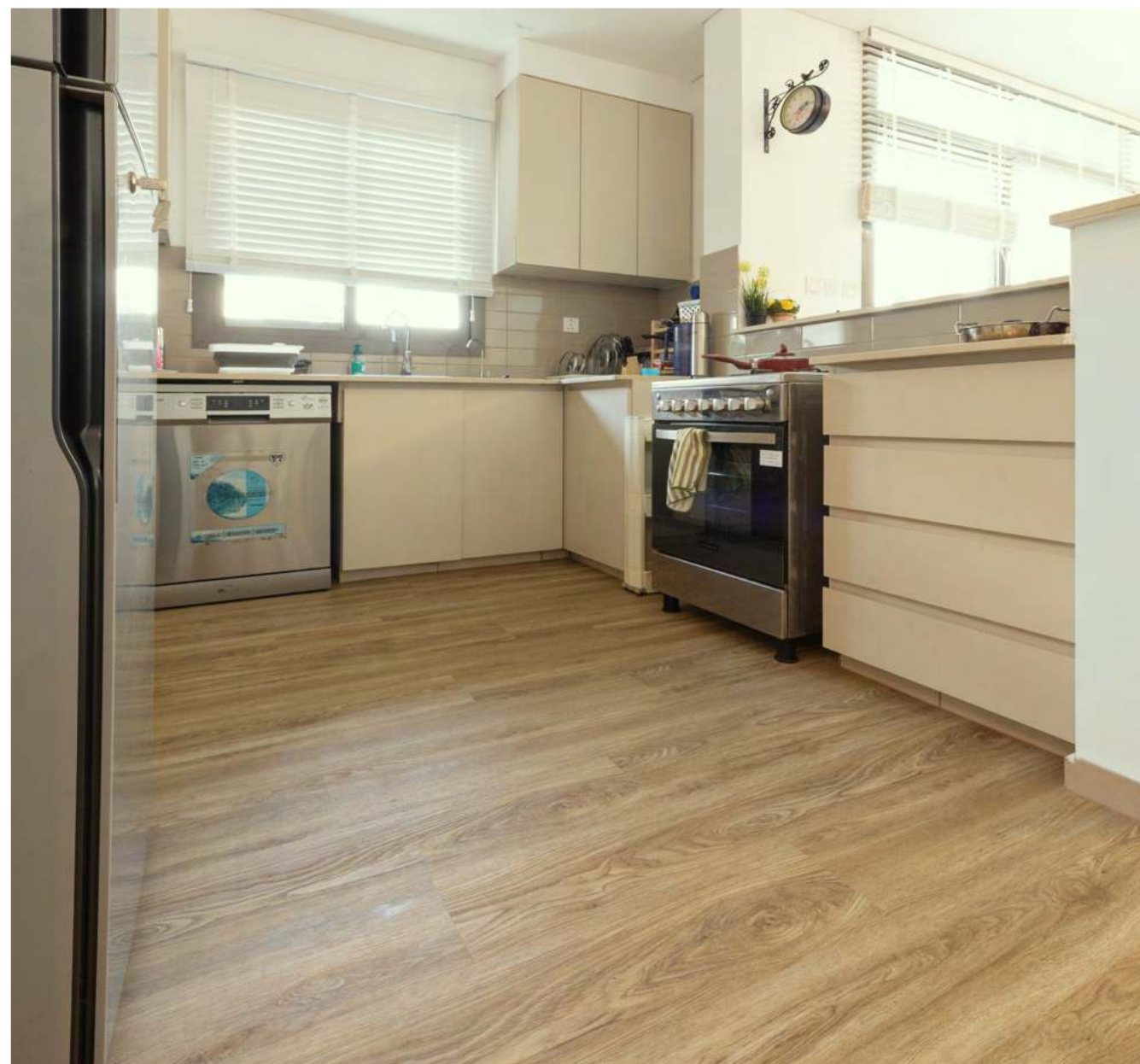
Thickness (mm)	4.00
Wear Layer (mm)	0.3
Utilization Class	
Coating	PU with DiamondShield™
Embossing	Real Wood Texture
Bevelled	V-grooved
Fiberglass	yes
Plank Size	177.8mm x 1219.2mm
Sqm Per Pack	2.1677
Pallet Packing	151.741 / 70 packs
Impact Sound Insulation	ISO 717-2
Chemical Resistance	High Resistance
Residual Indentation	≤ 0.08mm
Dimensional Stability	EN423
Colour Fastness to Light	EN433
Slip Resistance	EN434
Watertightness	EN20105-B02
Wear Resistance	DIN51130
Antimicrobial Activity	EN13553
Fire Rating	EN660-2
Warranty for Domestic use	ASTMG 21-96
Warranty for Commercial use	EN ISO 9239-1

We strongly advise that before ordering material, you see a physical sample of your chosen products. Images are for illustration purposes only. The policy of the company is one of continuous development and improvement. Gerbür owns copyright and protection on all designs.



## WASHED OAK

JIN-GBAC-01



With its durability and realistic wood like top surface, Gerbür Aqua Clicks-Washed Oak really is the pinnacle of today's modern flooring. Perfect choice for those who desire the beauty of wood floors without compromising performance. Its light and most refreshing wood grains make this Oak-effect vinyl tile a smart and sophisticated choice among the Aqua-Click-Natural collection of floorings. It is equally a smart choice when it comes to value for money and minimum maintenance. In a family home, hygiene is particularly important.

## ASH GREY

JIN-GBAC-02

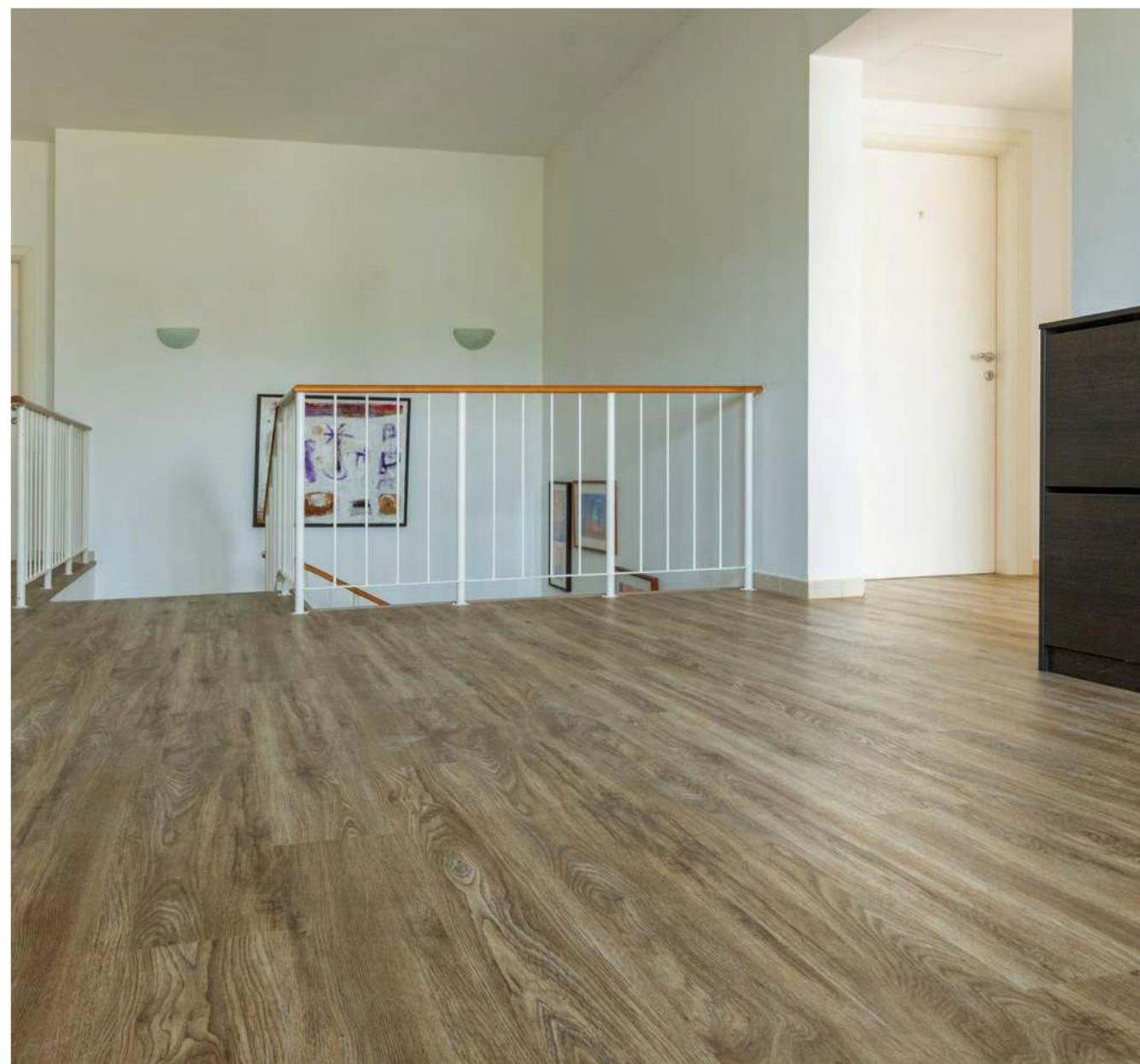


With the huge upsurge in today's trends of grey and silver flooring, Ash Grey is a floor for those that like to stay abreast with today's interior fashions. The smooth grey grains and embossed effect of this tile are smart, sophisticated and look remarkable in both commercial and domestic settings. The interlocking system facilitates easy installations. While the sort after chic wood floor can be expensive and difficult to maintain- Gerbür Aqua Clicks- Ash Grey offers a stylish and elegant floor with excellent value for money.



## LIME TREE

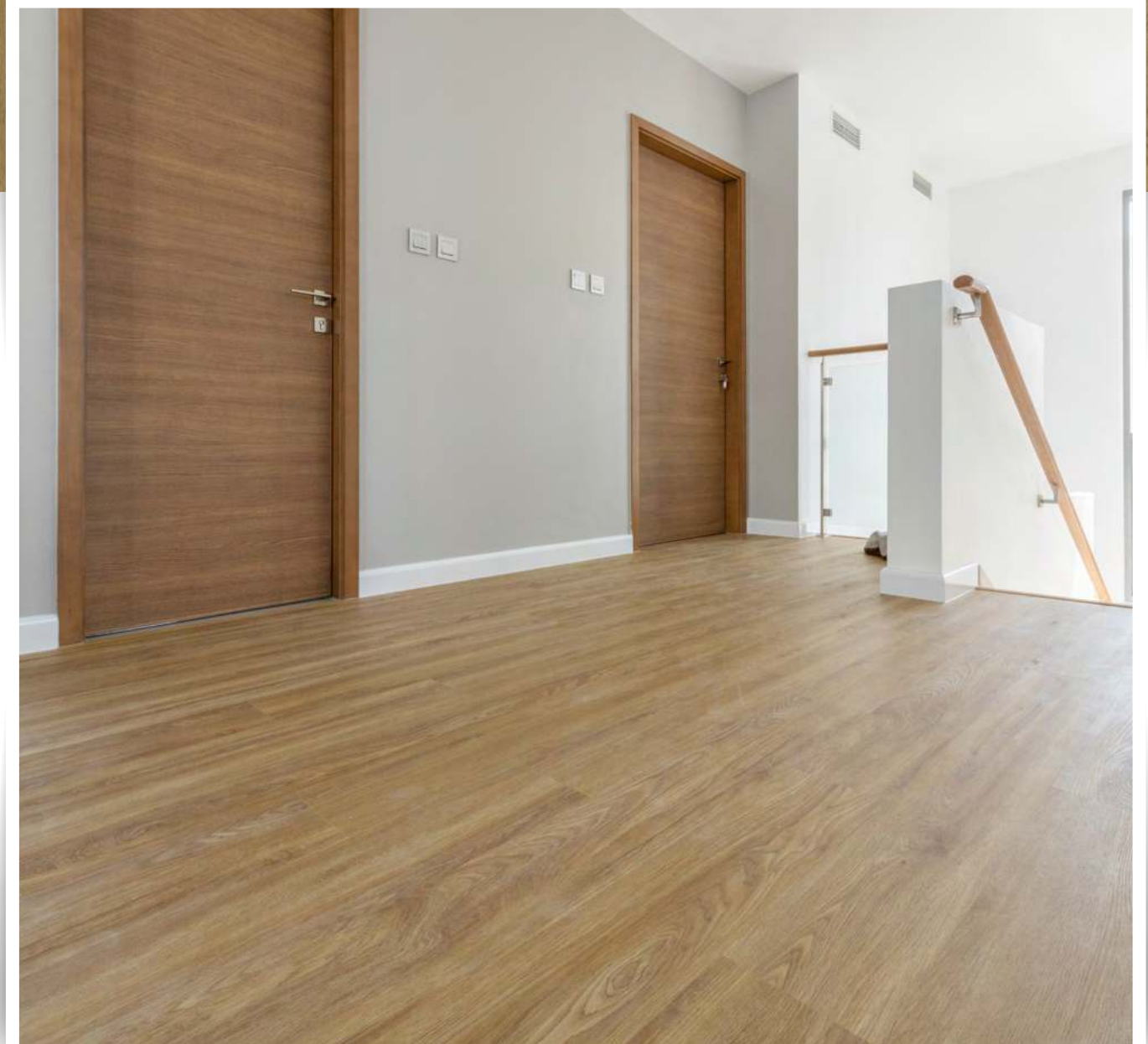
JIN-GBAC-03



Waterproof, crayon and child proof! Lime Tree is not only a beautiful floor-covering, it also stands up to the most demanding of installations. The faded grains and knots with subtle oak tones create a very pronounced real wood effect. This Vinyl tile doesn't let you compromise on the beauty of your floor when you're looking for durability and low maintenance. Gerbür Aqua Click-Lime Tree is crafted to withstand the toughest environments from a child's nursery to a busy hotel foyer.

## COTTON WOOD

JIN-GBAC-04



Warm and neutral with a strikingly realistic surface graining makes Gerbür Aqua Click-Cotton Wood virtually impossible to distinguish from a real wooden floor. This light-as-air pattern of wood, with its soft curls & knots expresses Fresh, clean appearance and is very hygienic with each tile connecting so firmly in an interlocking clasp not allowing bacteria and dirt to latch into cracks. Its Water proof and moisture resistant feature makes it perfectly suitable for homes with young kids or pets.



## NUTMEG

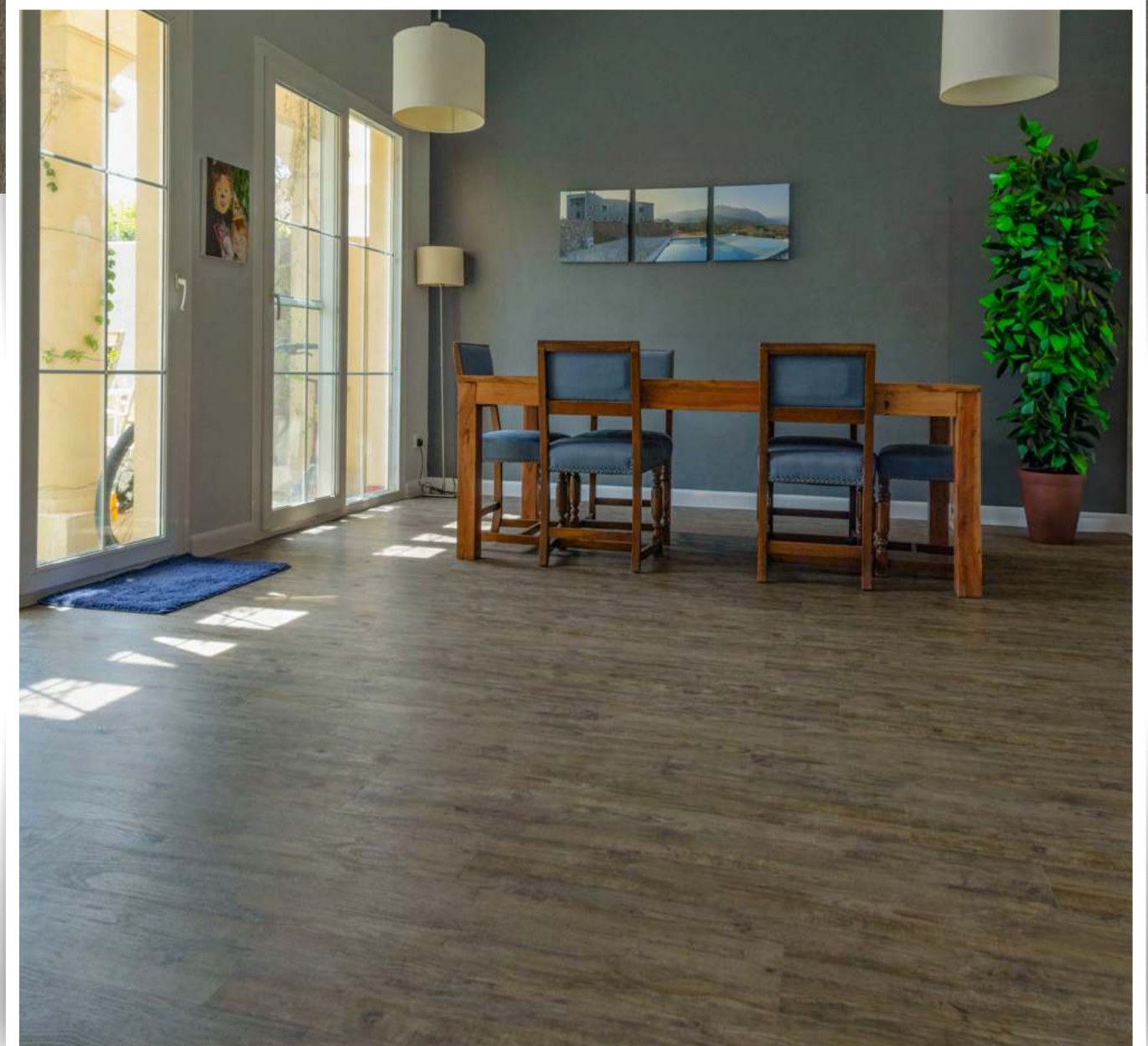
JIN-GBAC-05



With deep wood grain surface, extremely appealing warmth and exceptional durability, Gerbür Aqua Click-Nutmeg exudes luxury and modernity. The grain pattern is reminiscent of the latest trends in flooring and at the same time has a very classic touch to it. These tiles perfectly replicate the look and feel of nature with the versatility of vinyl. This means you can have the effect of natural stylish real wood with none of the disadvantages.

## IRON SPRUCE

JIN-GBAC-06

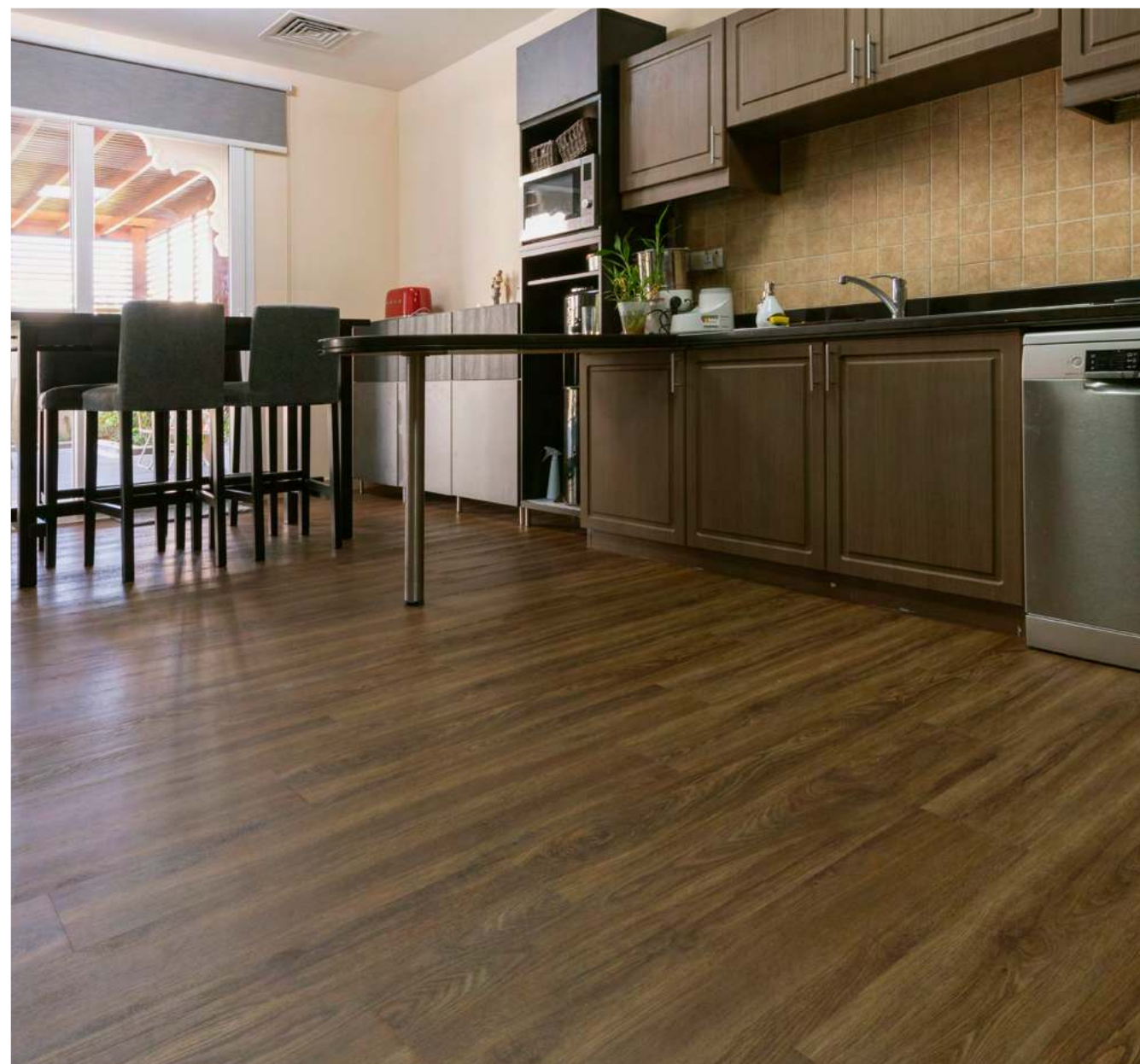


Producing a striking take on traditional distressed spruce flooring, Gerbür Aqua Click-Iron Spruce captures perfectly today's trend toward grey tonal flooring. As simple as it is, the floor design has an awesomely unique attitude of its own. The easy to install locking mechanism makes this a great floor for an affordable DIY job. But you would really make up for the installation cost with these cost-effective vinyl tiles from Gerbür provide incredible durability and excellent value for money.



## JARRAH

JIN-GBAC-07



Gerbür Aqua Click-Jarrah is more than a floor-covering. It is a fashion statement coupled with maintenance free lifestyle choice. Without losing any of the authentic charm of a wooden floor, the registered emboss finish of these Jarrah LVT tiles meet the needs of pure and sophisticated decor. This is the perfect floor for a modern home which looks to make a true statement in design without having to concede high maintenance costs. With its lifetime residential warranty, you have an added assurance of durability while this flooring itself is built to endure the toughest environments from a child's nursery to a busy hotel foyer. No stiletto heel marks like on a real wood floor or unsightly scratches.

## ROSEWOOD

JIN-GBAC-08



Gerbür Aqua Click-Rosewood Vinyl floor tile is a perfect all-encompassing package for your decorating dollar, right from being great value for money, minimum maintenance, to great looking realistic wood grain effects, warm, beautiful and extremely hardwearing, with minimum maintenance. Not to forget the convenience of installation, with the interlocking system.



## SILVER SPRUCE

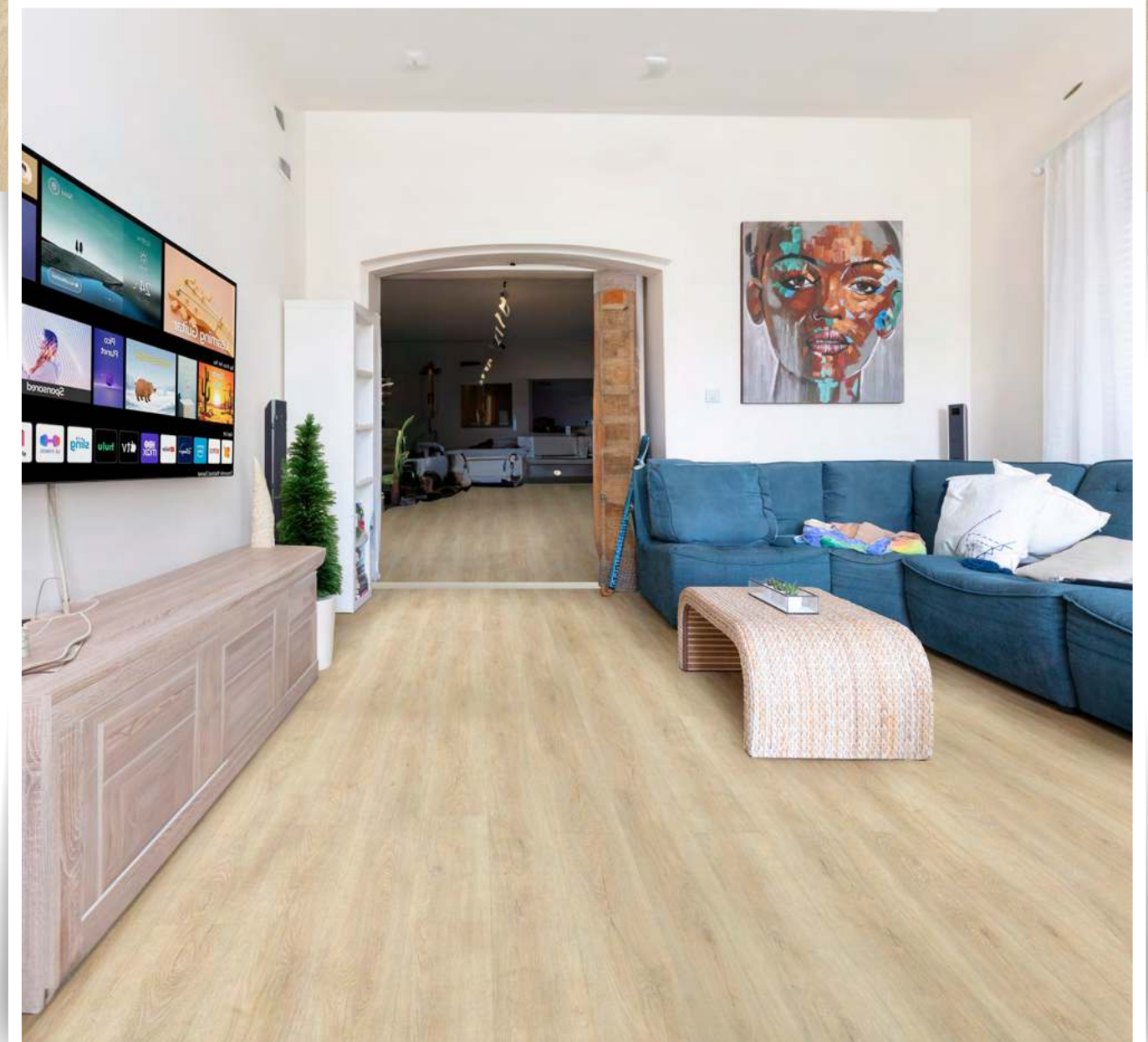
JIN-GBAC-09



With grey and silver being in trend, Silver Spruce from Gerbur Aqua Click stands as the epitome of elegance and durability. Meticulously crafted, these high-quality vinyl planks redefine simplicity with their hassle-free interlocking system, transforming your space quickly saving time and effort. The Silver Spruce design brings a touch of natural beauty to any space enhancing its aesthetic appeal and with its low maintenance, durability and longevity, it's the ideal choice for those who demand both beauty and resilience.

## MULLED OAK

JIN-GBAC-10



Rich caramel tones and traditional wood grain of Mulled Oak from Gerbur Aqua Click make it effortlessly mimic the authenticity of real wooden floors. Mulled Oak's classic appeal is complemented by value for money and with its ease of click installation, it can save time and effort making it an ideal selection for any interior space. Moreover, it ensures hygiene for family spaces by preventing bacteria and dirt from latching into the cracks thanks to the click system and the surface can be simply wiped. Being waterproof and moisture-resistant, Mulled Oak can be a perfect fit for any space while offering elegance and timeless beauty.



# Accessories

Once your floor has been fitted you can really see the impact a new LVT flooring has on your living spaces. However, without the addition of door bars or beading, it can still look unfinished. You really can get more out of your floor with Gerbür accessories – not only do they add that final flourish to the look of your floor, they also add extra protection against accidental damage. At Gerbür we offer all the accessories you need to get the perfect flooring finish. From adhesives which secure your floor to the sub-floor, to decorative door bars and stair nose, you'll find them in store and online. For more information on flooring accessories visit our friendly advisers in our local stores.

- Investing in flooring accessories will:
- add the finishing touches to your rooms
  - help to keep your flooring secure and looking great
  - bridge gaps between rooms and flooring types for a seamless transition
  - provide extra protection for your floor

Gerbür stock a range of flooring accessories for vinyl, laminate and luxury vinyl tiles. Getting the right accessories for your floor will ensure you get the perfect finish every time. It is easy to get confused, so make sure you get the right accessory for your needs.



### Skirting

AVAILABLE COLOURS	21 colours
FINISH	Gloss
RANGE	Skirting
THICKNESS	15mm
TYPE	Beading
EFFECT	Wood Effect
FLOOR TYPE	Laminate Floor
INSTALLATION	Glue Down
DESCRIPTION	Gerbür Accessories -2400mm x90mmx 15mm



### Beading

AVAILABLE COLOURS	21 colours
FINISH	Gloss
RANGE	Beading
THICKNESS	12mm
TYPE	Beading
EFFECT	Wood Effect
FLOOR TYPE	Laminate Floor
INSTALLATION	Glue Down
DESCRIPTION	Gerbür Accessories - 28mm x 2400mm x 12mm



### Stair Nosing

AVAILABLE COLOURS	21
FINISH	Gloss
RANGE	Stiar Nosing
THICKNESS	15mm
TYPE	Door Bars/ Trims
EFFECT	Wood Effect
FLOOR TYPE	Laminate Floor
INSTALLATION	Glue Down
DESCRIPTION	Gerbür Accessories - 55mm x 2400mm x 15mm



### Reducer

AVAILABLE COLOURS	21
FINISH	Gloss
RANGE	Reducer
THICKNESS	12 mm, 8 mm
TYPE	Door Bars / Trims
EFFECT	Wood Effect
FLOOR TYPE	Laminate Floor
INSTALLATION	Glue Down
DESCRIPTION	Gerbür Accessories - 46mm x 2400mm x 12mm Gerbür Accessories - 46mm x 2400mm x 8mm



### T Bar

AVAILABLE COLOURS	21
FINISH	Gloss
RANGE	T Bar
THICKNESS	12mm
TYPE	Door Bars / Trims
EFFECT	Wood Effect
FLOOR TYPE	Laminate Floor
INSTALLATION	Glue Down
DESCRIPTION	Gerbür Accessories - 46mm x 2400mm x 12mm





# EVA Flooring Underlay

- Doesn't absorb water.
- Reduce noise transfer in mulit-layered buildings.
- Stops heats-cold transfer from and to the laminate floor.
- Non-poisonous and chemical resistant.
- Under which it is laid when used in the recommended locations.

## TECHNICAL SPECIFICATION

Roll Size: 18.6m2 per roll

PROPERTIES	UNIT	VALUE	TEST METHOD
THICKNESS	mm	2.0	ASTM D-792
DENSITY	g/cm3	0.16	ASTM D-792
CELL SIZE	mm	0.56	ASTM D-3576
THERMAL CONDUCTIVITY	w/m.c/w°	0.0812	ASTM D-5930
THERMAL RESISTANT	m2° c/w	0.0572	ASTM C-167
TENSILE STRENGTH	kg/cm2	5.4 3.2	ASTM D-638
ELONGATION	%	110 110	ASTM D-638
HEAT DIMENSIONAL STABILITY	%	+4 - 4	ASTM D-6289
WATER ABSORPTION	mg/cm2	0.017	ASTM D-570
MOISTURE PERMEABILITY	g/cm2.24hr	0.48	ASTM D-570
TEARING STRENGTH	kg/cm	2.10	CCS METHOD
THE PERMANENT COMPRESSION SET (100 KG/CM2)	%	7	CCS METHOD



## Deap clean solutions



## Vinyl Floor Cleaner

Gerbür Vinyl Floor Cleaner an intensive antistatic cleaner recommended for cleaning vinyl flooring. The antistatic emulsion helps the absorption and prevention of dust build-up. Further more Gerbür Vinyl Floor Cleaner contains special nanoparticles which guarantee to the treated surfaces a deep cleaning and a long lasting action.





Design and Function, welcome to Gerbür

[www.gerbur.com](http://www.gerbur.com)